

共模扼流滤波器

DC Common Mode (Line Filter)



特性

Characteristics

高阻抗高达13,000Ω

High impedance up to 13,000 Ω

高达2,500Ma的大电流

High current up to 2,500 Ma

额定电压：80 VDC (42 VAC)

Rated voltage: 80 VDC (42 VAC)

应用

Application

数据线和信号线的电流补偿扼流圈

Current compensated choke for data and signal lines

信号和传感器线路、电源系统

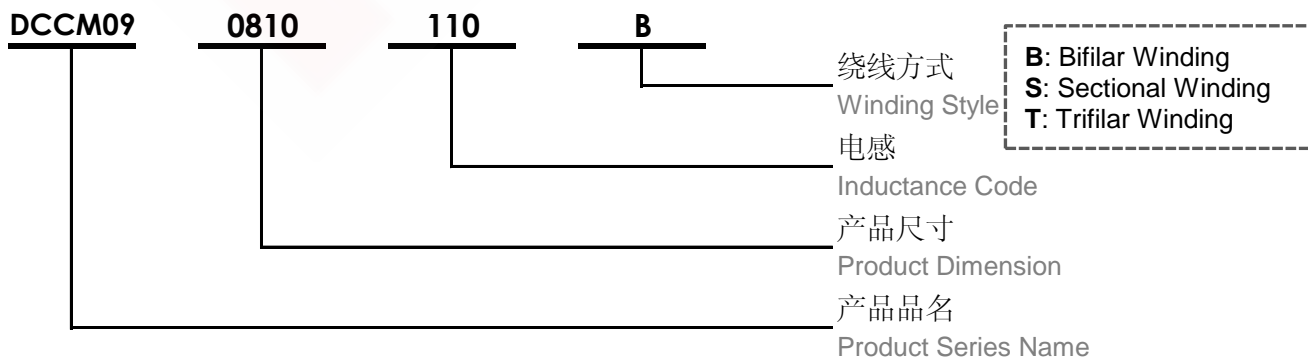
Signal and sensor lines, Power supply system

共模噪声的抑制

Suppression of common mode noise

产品品名介绍

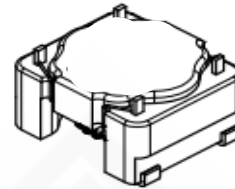
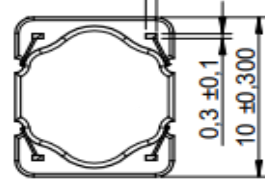
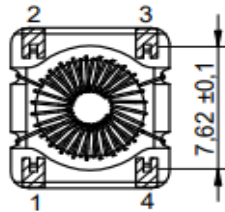
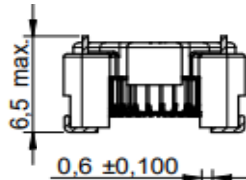
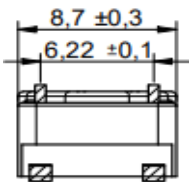
Product Number Structure





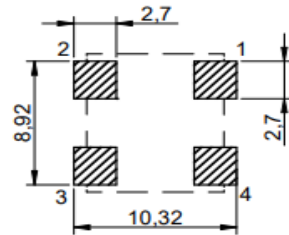
尺寸

Dimension (mm)



焊盘推荐

Land Pattern Recommended (mm)



示意图

Schematics



电性特性

Electrical Properties

型号 Part No.	电感 Inductance μH	阻抗 Impedance Zmax (Ω)	温升电流 Rated Current I _r max 40°C (mA)	直流电阻 DC Resistance DCR _{max} (Ω)	绕线方式 Winding Style	包装数量 Packaging Qty pcs
DCCM09-0910-222B	2,200 ±40%	7,500	750	0.300	Bifilar	800
DCCM09-0910-332B	3,300 ±40%	8,900	650	0.360	Bifilar	800
DCCM09-0910-392B	3,900 ±40%	9,600	520	0.540	Bifilar	800
DCCM09-0910-472B	4,700 ±40%	13,000	350	0.720	Bifilar	800

测试状态

Test Condition

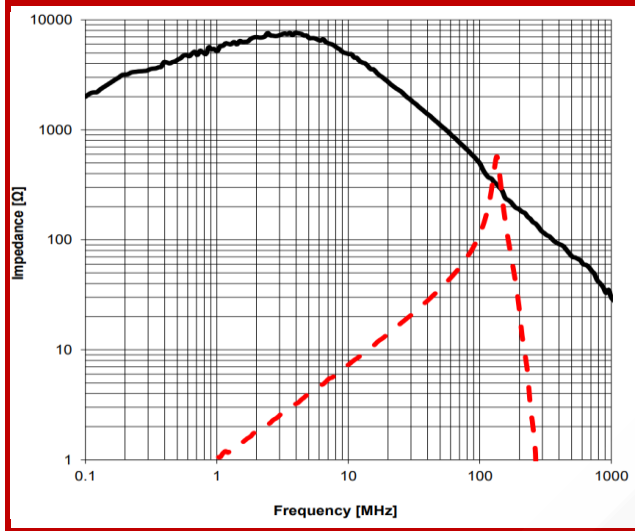
- ☆ 电感测试条件为 100kHz / 100mV (25°C)
Inductance measure condition at 100kHz / 100mV (25°C)
- ☆ 工作温度: -40°C ~ +125°C
Operating Temperature: -40°C ~ +125°C
- ☆ 速率电压: 80V
Rated Voltage: 80V



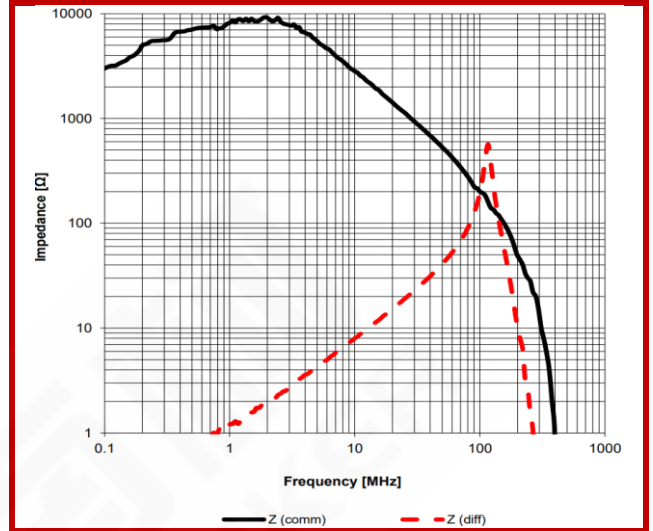
典型阻抗特性

Typical Impedance Characteristics

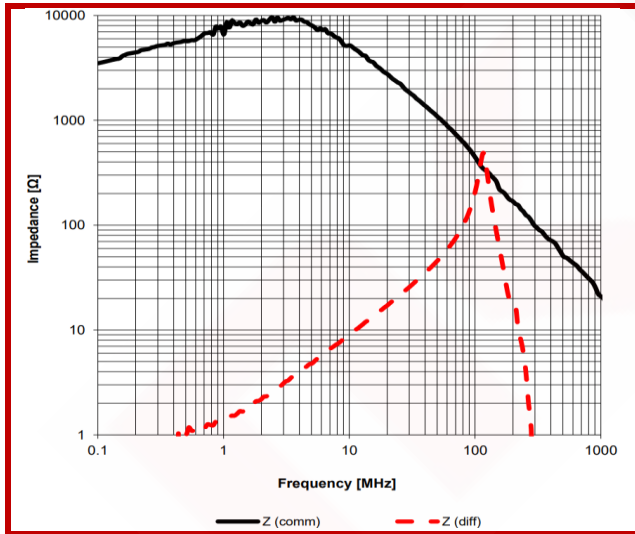
DCCM09-0910-222B



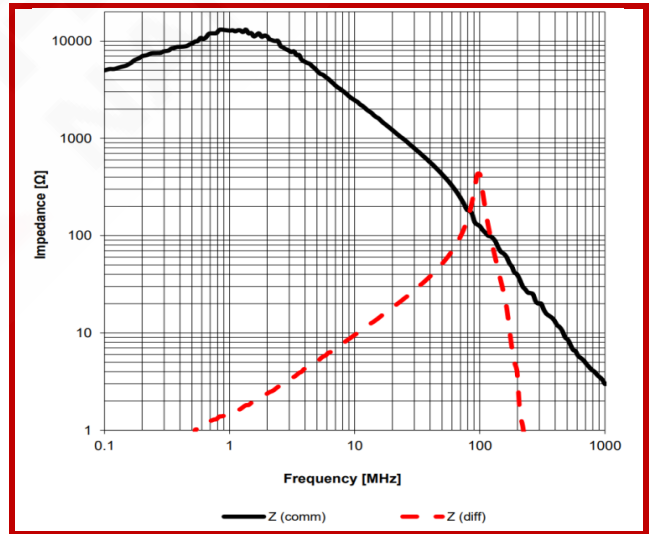
DCCM09-0910-332B



DCCM09-0910-392B



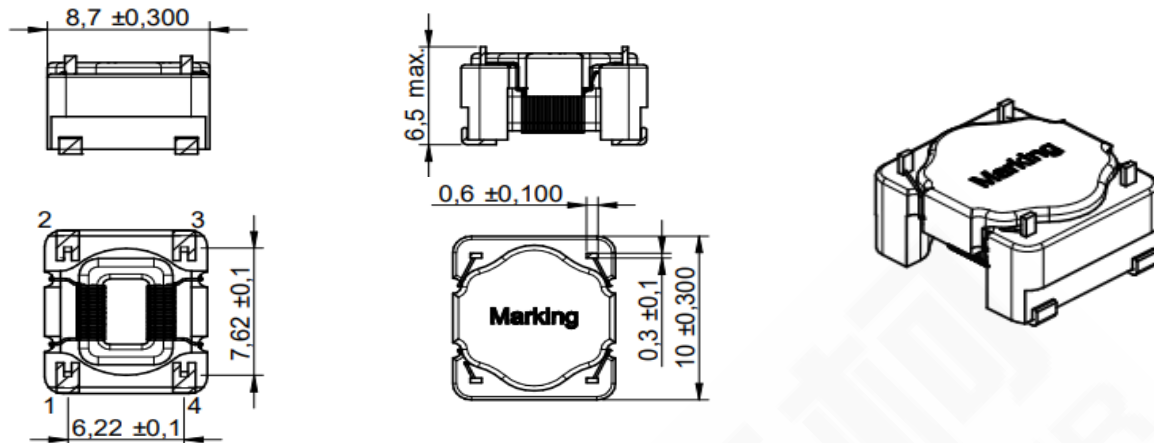
DCCM09-0910-472B





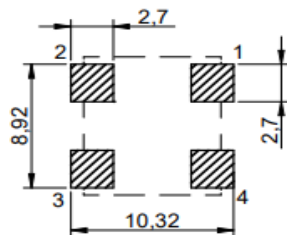
尺寸

Dimension (mm)



焊盘推荐

Land Pattern Recommended (mm)



示意图

Schematics



电性特性

Electrical Properties

型号 Part No.	电感 Inductance μH	阻抗 Impedance Zmax (Ω)	温升电流 Rated Current I _r max 40°C (mA)	直流电阻 DC Resistance DCR _{max} (Ω)	绕线方式 Winding Style	包装数量 Packaging Qty pcs
DCCM09-0910-121S	120 ±40%	460	2,500	0.025	Sectional	800
DCCM09-0910-221S	220 ±40%	780	2,200	0.032	Sectional	800
DCCM09-0910-251S	250 ±40%	970	2,000	0.035	Sectional	800
DCCM09-0910-471S	470 ±40%	1,750	1,600	0.065	Sectional	800
DCCM09-0910-102S	1,000 ±40%	3,600	950	0.180	Sectional	800

测试状态

Test Condition

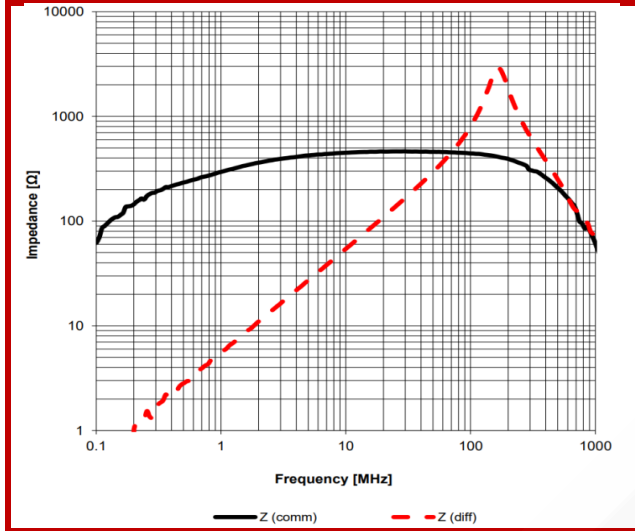
- ☆ 电感测试条件为 100kHz / 100mV (25°C)
Inductance measure condition at 100kHz / 100mV (25°C)
- ☆ 工作温度: -40°C ~ +125°C
Operating Temperature: -40°C ~ +125°C
- ☆ 速率电压: 80V
Rated Voltage: 80V



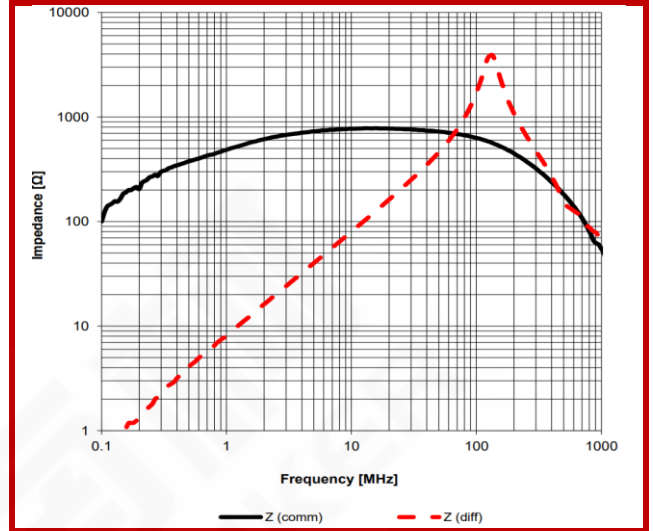
典型阻抗特性

Typical Impedance Characteristics

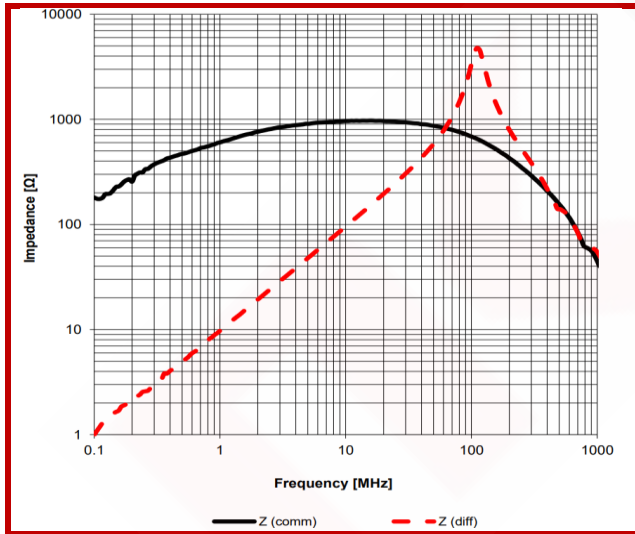
DCCM09-0910-121S



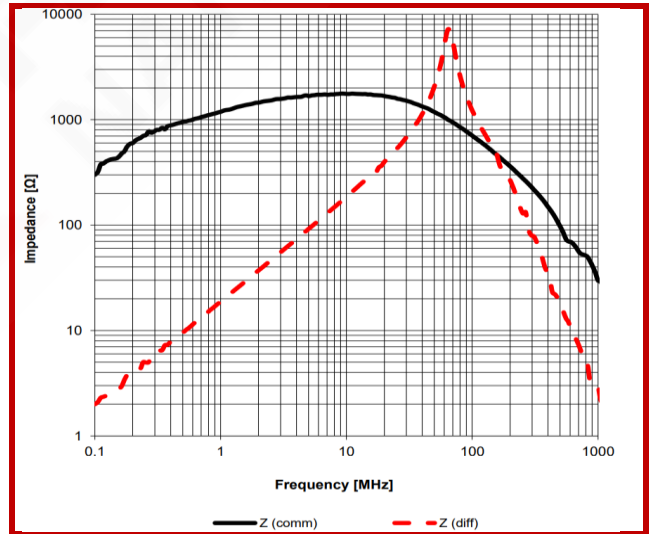
DCCM09-0910-221S



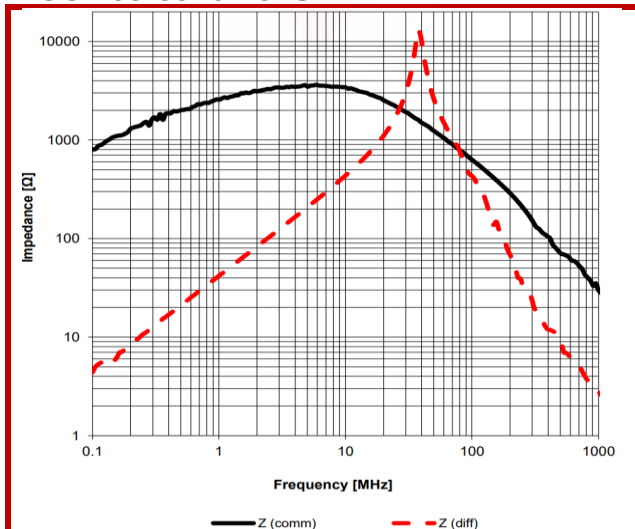
DCCM09-0910-251S



DCCM09-0910-471S



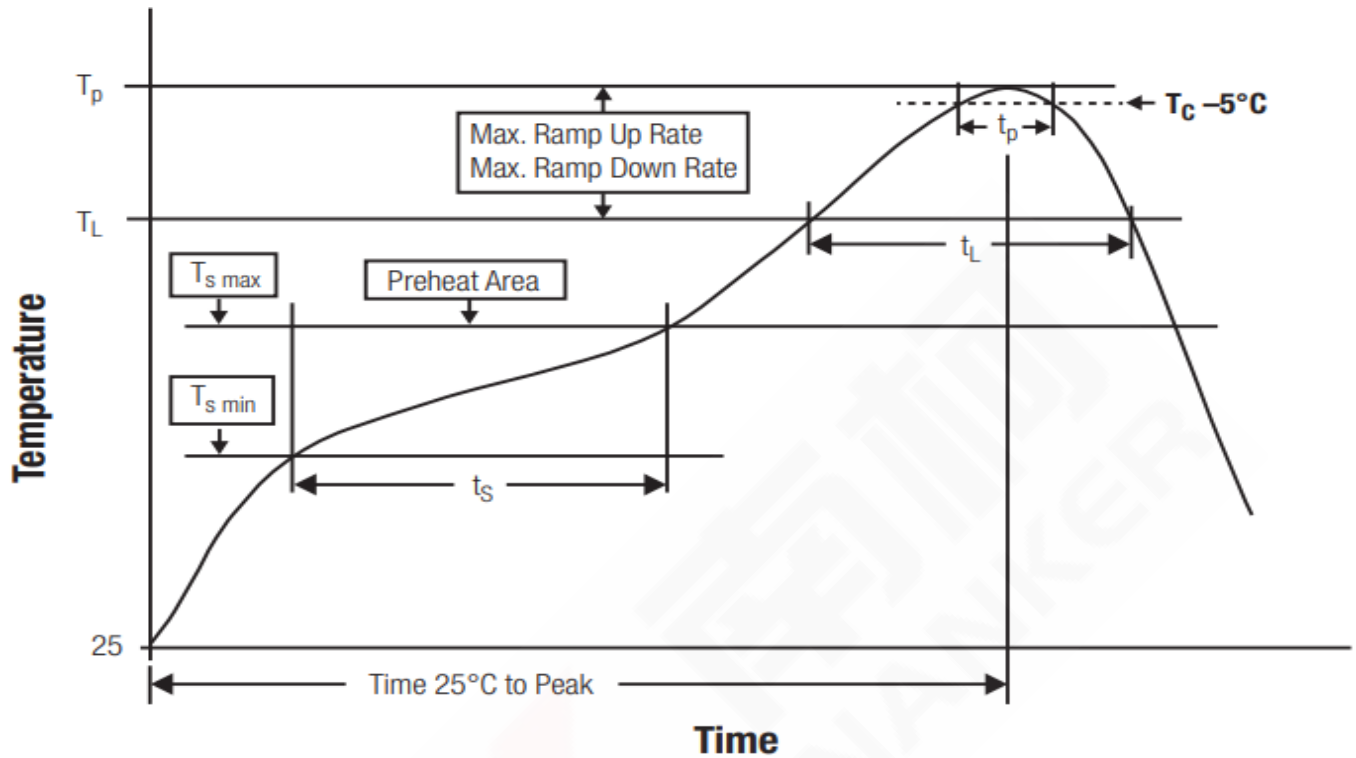
DCCM09-0910-102S





回流焊曲线图

Classification Reflow Profile for SMT Components



封装体峰值温度(Tp)分类

Classification Reflow Soldering Profile:

	封装厚度 Package Thickness	封装体积 Package Volume		
		<350 mm ³	350~2,000 mm ³	>2,000 mm ³
无铅装配 PB-Free Assembly	<1.60mm	260°C	260°C	260°C
	1.60~2.50mm	260°C	250°C	245°C
	>2.50mm	260°C	245°C	245°C

- ◆ 回流焊参照标准 IPC/JEDEC J-STD-020D。
Reflow is refer to standard IPC/JEDEC J-STD-020D.