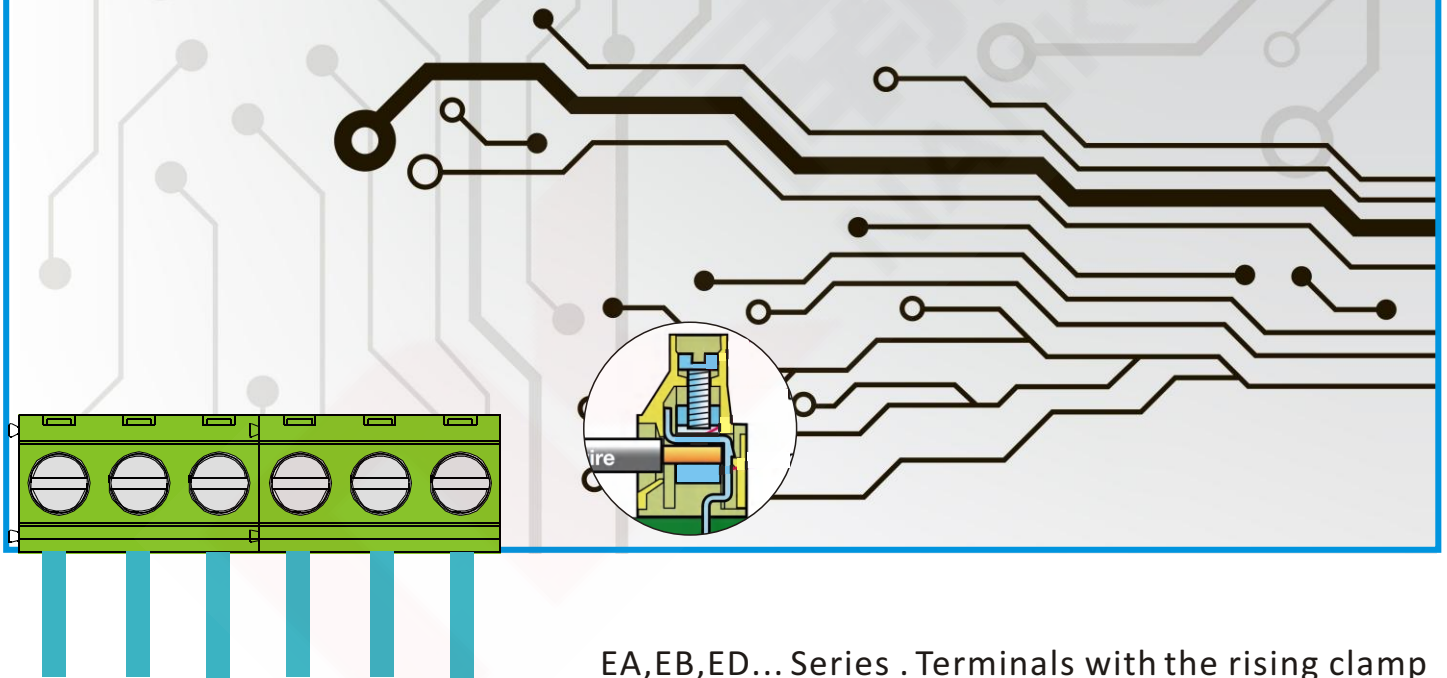


Rising Clamp System

Euro PCB terminal block



Nomenclature rules

Example:

EB HS 381 xx x xxx
① ② ③ ④ ⑤ ⑥

- ① Type
- ② Product style
- ③ Pitch
- ④ Poles
- ⑤ Color
- ⑥ Custom

Color

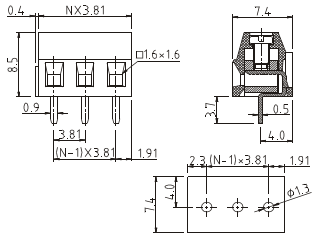
0	Black	5	Green
1	Brown	6	Blue
2	Red	7	Violet
3	Orange	8	Dark grey
4	Yellow	9	White

EA,EB,ED... Series . Terminals with the rising clamp system incorporate an integral sold-ering pin made of special grade brass. Plating consists of an nickel. ribs across the contact area of the terminal and the special shape of the base of the terminal body ensure that the wires are securely clamped. Thereby guaranteeing good contact, as well as holding the wire securely and without damage.

Rising clamp system apply the high reliability structure of wire connections and professional production model.This enable the quality to be stable. The series are extremely suitable for industrial control and information technology.



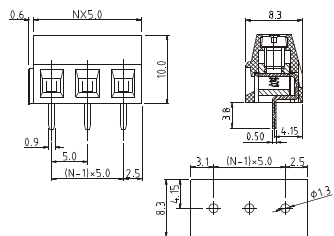
EBHS381 Pitch 3.81mm
Poles 2p~24p
PCB screw terminal blocks, horizontal wire inlet



Technical data				
		Approval		
Technical data(UL/cUL)	Use Group	B	C	D
Nominal voltage (V)	300	-	-	-
Nominal current (A)	10	-	-	-
Connection capacity(AWG)	30-16	-	-	-
Technical data in accordance with IEC				
Rated insulation voltage at pollution degree 2 (V)	200			
Rated current/conductor cross-section (A/mm ²)	10/1			
Solid/stranded(mm ²)	0.14-1.5/0.14-1.0			
Surge voltage category/pollution degree	III/3	III/2	II/2	
Rated insulation voltage(V)	160	200	400	
Rated surge voltage(kV)	2.5	2.5	2.5	
General data				
Stripping length(mm)	5-6			
Screw thread	M2			
Tightening torque(Nm)	0.20-0.22			
Insulation material group	PA 66 I V0			



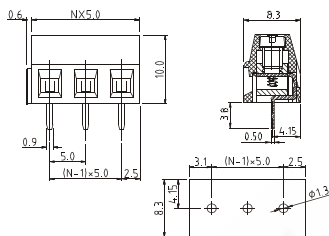
EGHM500 Pitch 5.0mm
Poles 2p,3p
PCB screw terminal blocks, horizontal wire inlet



Technical data				
		Approval		
Technical data(UL/cUL)	Use Group	B	C	D
Nominal voltage (V)	300	-	-	-
Nominal current (A)	10	-	-	-
Connection capacity(AWG)	30-16	-	-	-
Technical data in accordance with IEC and VDE				
Rated insulation voltage	250			
Rated current/conductor cross-section (A/mm ²)	13.5/1.5			
Solid/stranded(mm ²)	0.14-1.5/0.14-1.5			
Surge voltage category/pollution degree	III/3	III/2	II/2	
Rated insulation voltage(V)	250	400	630	
Rated surge voltage(kV)	4	4	4	
General data				
Stripping length(mm)	5-6			
Screw thread	M3			
Tightening torque(Nm)	0.4-0.45			
Insulation material group	PA 66 I V0			



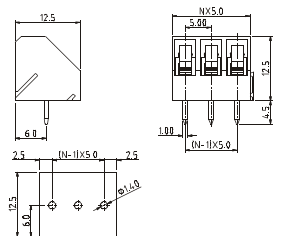
EGHS500 Pitch 5.0mm
Poles 2p~24p
Solid block type
PCB screw terminal blocks, horizontal wire inlet



Technical data				
		Approval		
Technical data(UL/cUL)	Use Group	B	C	D
Nominal voltage (V)	300	-	-	-
Nominal current (A)	10	-	-	-
Connection capacity(AWG)	30-16	-	-	-
Technical data in accordance with IEC and VDE				
Rated insulation voltage	250			
Rated current/conductor cross-section (A/mm ²)	13.5/1.5			
Solid/stranded(mm ²)	0.14-1.5/0.14-1.5			
Surge voltage category/pollution degree	III/3	III/2	II/2	
Rated insulation voltage(V)	250	400	630	
Rated surge voltage(kV)	4	4	4	
General data				
Stripping length(mm)	5-6			
Screw thread	M3			
Tightening torque(Nm)	0.4-0.45			
Insulation material group	PA 66 I V0			



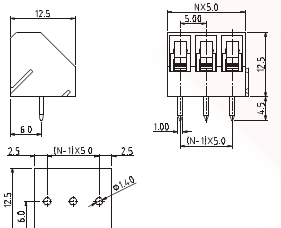
EHAM500 Pitch 5.0mm
Poles 2p,3p
PCB screw terminal blocks, 45D angled wire inlet



Technical data				
		Approval		
Technical data(UL/cUL)	Use Group	B	C	D
Nominal voltage (V)	300	-	-	300
Nominal current (A)	15	-	-	10
Connection capacity(AWG)	24-12	-	-	24-12
Technical data in accordance with IEC and VDE				
Rated insulation voltage	250			
Rated current/conductor cross-section (A/mm ²)	24/2.5			
Solid/stranded(mm ²)	0.5-4/0.5-2.5			
Surge voltage category/pollution degree	III/3	III/2	II/2	
Rated insulation voltage(V)	250	320	630	
Rated surge voltage(kV)	4	4	4	
General data				
Stripping length(mm)	6-7			
Screw thread	M2.5			
Tightening torque(Nm)	0.4-0.45			
Insulation material group	PA 66 I V0			



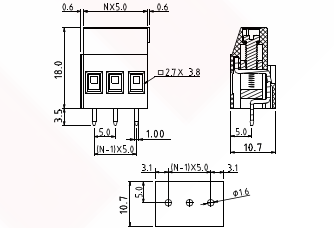
EHAS500 Pitch 5.0mm
Poles 2p~24p
Solid block type
PCB screw terminal blocks, 45D angled wire inlet



Technical data				
		Approval		
Technical data(UL/cUL)	Use Group	B	C	D
Nominal voltage (V)	300	-	-	300
Nominal current (A)	15	-	-	10
Connection capacity(AWG)	24-12	-	-	24-12
Technical data in accordance with IEC and VDE				
Rated insulation voltage	250			
Rated current/conductor cross-section (A/mm ²)	24/2.5			
Solid/stranded(mm ²)	0.5-4/0.5-2.5			
Surge voltage category/pollution degree	III/3	III/2	II/2	
Rated insulation voltage(V)	250	320	630	
Rated surge voltage(kV)	4	4	4	
General data				
Stripping length(mm)	6-7			
Screw thread	M2.5			
Tightening torque(Nm)	0.4-0.45			
Insulation material group	PA 66 I V0			



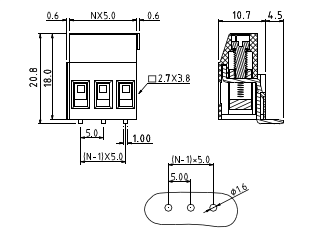
EJHM500 Pitch 5.0mm
Poles 2p,3p
PCB screw terminal blocks, horizontal wire inlet



Technical data				
		Approval		
Technical data(UL/cUL)	Use Group	B	C	D
Nominal voltage (V)	300	-	-	300
Nominal current (A)	20	-	-	10
Connection capacity(AWG)	30-12	-	-	30-12
Technical data in accordance with IEC				
Rated insulation voltage at pollution degree 2 (V)	400			
Rated current/conductor cross-section (A/mm ²)	24/2.5			
Solid/stranded(mm ²)	0.2-4/0.2-2.5			
Surge voltage category/pollution degree	III/3	III/2	II/2	
Rated insulation voltage(V)	250	400	630	
Rated surge voltage(kV)	4	4	4	
General data				
Stripping length(mm)	7-8			
Screw thread	M3.0			
Tightening torque(Nm)	0.5-0.6			
Insulation material group	PA 66 I V0			



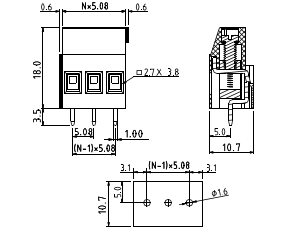
EJVM500 Pitch 5.0mm
Poles 2p,3p
PCB screw terminal blocks, horizontal wire inlet



Technical data				
		Approval		
Technical data(UL/cUL)	Use Group	B	C	D
Nominal voltage (V)	300	-	-	300
Nominal current (A)	20	-	-	10
Connection capacity(AWG)	30-12	-	-	30-12
Technical data in accordance with IEC				
Rated insulation voltage at pollution degree 2 (V)	400			
Rated current/conductor cross-section (A/mm ²)	24/2.5			
Solid/stranded(mm ²)	0.2-4/0.2-2.5			
Surge voltage category/pollution degree	III/3	III/2	II/2	
Rated insulation voltage(V)	250	400	630	
Rated surge voltage(kV)	4	4	4	
General data				
Stripping length(mm)	7-8			
Screw thread	M3.0			
Tightening torque(Nm)	0.5-0.6			
Insulation material group	PA 66 I V0			



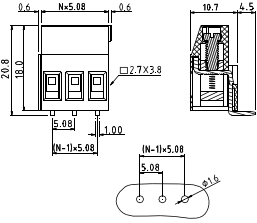
EJHM508 Pitch 5.08mm
Poles 2p,3p
PCB screw terminal blocks, horizontal wire inlet



Technical data				
		Approval		
Technical data(UL/cUL)	Use Group	B	C	D
Nominal voltage (V)	300	-	-	300
Nominal current (A)	20	-	-	10
Connection capacity(AWG)	30-12	-	-	30-12
Technical data in accordance with IEC				
Rated insulation voltage at pollution degree 2 (V)	400			
Rated current/conductor cross-section (A/mm ²)	24/2.5			
Solid/stranded(mm ²)	0.2-4/0.2-2.5			
Surge voltage category/pollution degree	III/3	III/2	II/2	
Rated insulation voltage(V)	250	400	630	
Rated surge voltage(kV)	4	4	4	
General data				
Stripping length(mm)	7-8			
Screw thread	M3.0			
Tightening torque(Nm)	0.5-0.6			
Insulation material group	PA 66 I V0			



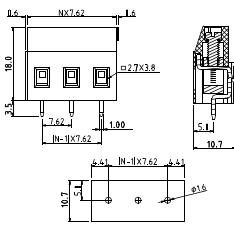
EJVM508 Pitch 5.08mm
Poles 2p,3p
PCB screw terminal blocks, Vertical wire inlet



Technical data				
Approval				
Technical data(UL/cUL)	Use Group	B	C	D
Nominal voltage (V)		300	-	300
Nominal current (A)		20	-	10
Connection capacity(AWG)		30-12	-	30-12
Technical data in accordance with IEC				
Rated insulation voltage at pollution degree 2 (V)		400		
Rated current/conductor cross-section (A/mm ²)		24/2.5		
Solid/stranded(mm ²)		0.2-4/0.2-2.5		
Surge voltage category/pollution degree		III/3	III/2	II/2
Rated insulation voltage(V)		250	400	630
Rated surge voltage(kV)		4	4	4
General data				
Stripping length(mm)		7-8		
Screw thread		M3.0		
Tightening torque(Nm)		0.5-0.6		
Insulation material group		PA 66 I V0		



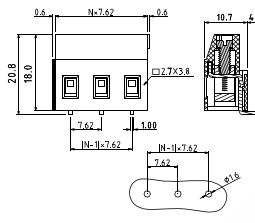
EJHM762 Pitch 7.62mm
Poles 2p,3p
PCB screw terminal blocks, horizontal wire inlet



Technical data				
Approval				
Technical data(UL/cUL)	Use Group	B	C	D
Nominal voltage (V)		300	-	300
Nominal current (A)		20	-	10
Connection capacity(AWG)		30-12	-	30-12
Technical data in accordance with IEC				
Rated insulation voltage at pollution degree 2 (V)		630		
Rated current/conductor cross-section (A/mm ²)		24/2.5		
Solid/stranded(mm ²)		0.2-4/0.2-2.5		
Surge voltage category/pollution degree		III/3	III/2	II/2
Rated insulation voltage(V)		500	630	1000
Rated surge voltage(kV)		6	6	6
General data				
Stripping length(mm)		7-8		
Screw thread		M3.0		
Tightening torque(Nm)		0.5-0.6		
Insulation material group		PA 66 I V0		



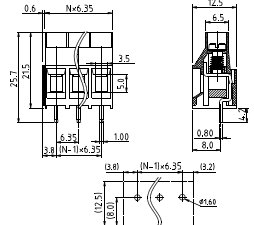
EJVM762 Pitch 7.62mm
Poles 2p,3p
PCB screw terminal blocks, Vertical wire inlet



Technical data				
Approval				
Technical data(UL/cUL)	Use Group	B	C	D
Nominal voltage (V)		300	-	300
Nominal current (A)		20	-	10
Connection capacity(AWG)		30-12	-	30-12
Technical data in accordance with IEC				
Rated insulation voltage at pollution degree 2 (V)		630		
Rated current/conductor cross-section (A/mm ²)		24/2.5		
Solid/stranded(mm ²)		0.2-4/0.2-2.5		
Surge voltage category/pollution degree		III/3	III/2	II/2
Rated insulation voltage(V)		500	630	1000
Rated surge voltage(kV)		6	6	6
General data				
Stripping length(mm)		7-8		
Screw thread		M3.0		
Tightening torque(Nm)		0.5-0.6		
Insulation material group		PA 66 I V0		



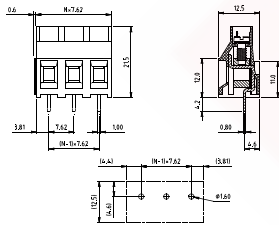
FMHM635 Pitch 6.35mm
Poles 2p,3p
PCB screw terminal blocks, horizontal wire inlet



Technical data				
Approval				
Technical data(UL/cUL)	Use Group	B	C	D
Nominal voltage (V)		300	-	300
Nominal current (A)		30	-	10
Connection capacity(AWG)		30-10	-	30-10
Technical data in accordance with IEC				
Rated insulation voltage at pollution degree 2 (V)		630		
Rated current/conductor cross-section (A/mm ²)		32/4		
Solid/stranded(mm ²)		0.2-6/0.2-4		
Surge voltage category/pollution degree		III/3	III/2	II/2
Rated insulation voltage(V)		500	630	1000
Rated surge voltage(kV)		6	6	6
General data				
Stripping length(mm)		7-8		
Screw thread		M3.5		
Tightening torque(Nm)		0.8		
Insulation material group		PA 66 I V0		



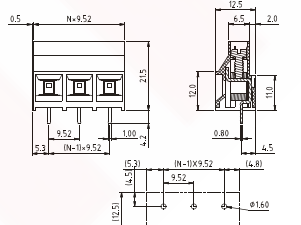
FMHM762 Pitch 7.62mm
Poles 2p,3p
PCB screw terminal blocks, horizontal wire inlet



Technical data				
Approval				
Technical data(UL/cUL)	Use Group	B	C	D
Nominal voltage (V)		300	-	300
Nominal current (A)		30	-	10
Connection capacity(AWG)		30-10	-	30-10
Technical data in accordance with IEC				
Rated insulation voltage at pollution degree 2 (V)		630		
Rated current/conductor cross-section (A/mm ²)		32/4		
Solid/stranded(mm ²)		0.2-6/0.2-4		
Surge voltage category/pollution degree		III/3	III/2	II/2
Rated insulation voltage(V)		500	630	1000
Rated surge voltage(kV)		6	6	6
General data				
Stripping length(mm)		7-8		
Screw thread		M3.5		
Tightening torque(Nm)		0.8		
Insulation material group		PA 66 I V0		



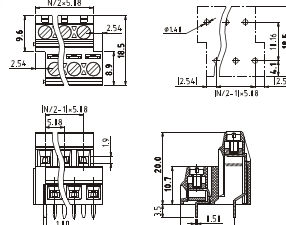
FMHM952 Pitch 9.52mm
Poles 2p,3p
PCB screw terminal blocks, horizontal wire inlet



Technical data				
Approval				
Technical data(UL/cUL)	Use Group	B	C	D
Nominal voltage (V)		300	300	300
Nominal current (A)		30	30	10
Connection capacity(AWG)		30-10	30-10	30-10
Technical data in accordance with IEC				
Rated insulation voltage at pollution degree 2 (V)		1000		
Rated current/conductor cross-section (A/mm ²)		32/4		
Solid/stranded(mm ²)		0.2-6/0.2-4		
Surge voltage category/pollution degree		III/3	III/2	II/2
Rated insulation voltage(V)		630	1000	1000
Rated surge voltage(kV)		6	6	6
General data				
Stripping length(mm)		7-8		
Screw thread		M3.5		
Tightening torque(Nm)		0.8		
Insulation material group		PA 66 I V0		



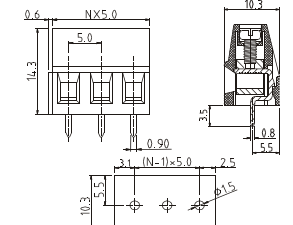
FDHO508 Pitch 5.08mm
Poles 2*2p,2*3p
Double-level PCB screw terminal blocks, horizontal wire inlet



Technical data				
Approval				
Technical data(UL/cUL)	Use Group	B	C	D
Nominal voltage (V)		300	-	300
Nominal current (A)		10	-	10
Connection capacity(AWG)		28-16	-	28-16
Technical data in accordance with IEC				
Rated insulation voltage at pollution degree 2 (V)		400		
Rated current/conductor cross-section (A/mm ²)		13.5/1.5		
Solid/stranded(mm ²)		0.14-1.5/0.14-1.5		
Surge voltage category/pollution degree		III/3	III/2	II/2
Rated insulation voltage(V)		250	400	630
Rated surge voltage(kV)		4	4	4
General data				
Stripping length(mm)		5-6		
Screw thread		M3		
Tightening torque(Nm)		0.4-0.45		
Insulation material group		PA 66 I V0		



EKHS500 Pitch 5.0mm
Poles 2p-24p
PCB screw terminal blocks, horizontal wire inlet



Technical data				
Approval				
Technical data(UL/cUL)	Use Group	B	C	D
Nominal voltage (V)		300	-	300
Nominal current (A)		16	-	10
Connection capacity(AWG)		30-12	-	30-12
Technical data in accordance with IEC				
Rated insulation voltage at pollution degree 2 (V)		400		
Rated current/conductor cross-section (A/mm ²)		17.5/2.5		
Solid/stranded(mm ²)		0.14-2.5/0.14-2.5		
Surge voltage category/pollution degree		III/3	III/2	II/2
Rated insulation voltage(V)		250	400	630
Rated surge voltage(kV)		4	4	4
General data				
Stripping length(mm)		6-7		
Screw thread		M2.5		
Tightening torque(Nm)		0.4-0.45		
Insulation material group		PA 66 I V0		