



Press-fit - Performance level II

No. of contacts	Contact arrangement	PCB thickness >2.2 mm	
		Part number	PU (Tube)
110		243-11010-15	
154		243-11310-15	
154		243-11322-15 cPCI Hot-Swap (P1)	10/240
100		243-11323-15 cPCI Telephony Spec (P4)	
154		243-11360-15F	

On request

- contact arrangement
- other contact surface

Ordering note

- PCB thickness 1.4 - 2.2 mm
(Part number 243-11xxx-05)

hm2.0



Type A Female Connector



Type: Female connector 90° with 5 rows

Termination: Press-fit

Number of contacts: 90, 110

Pitch: 2 mm

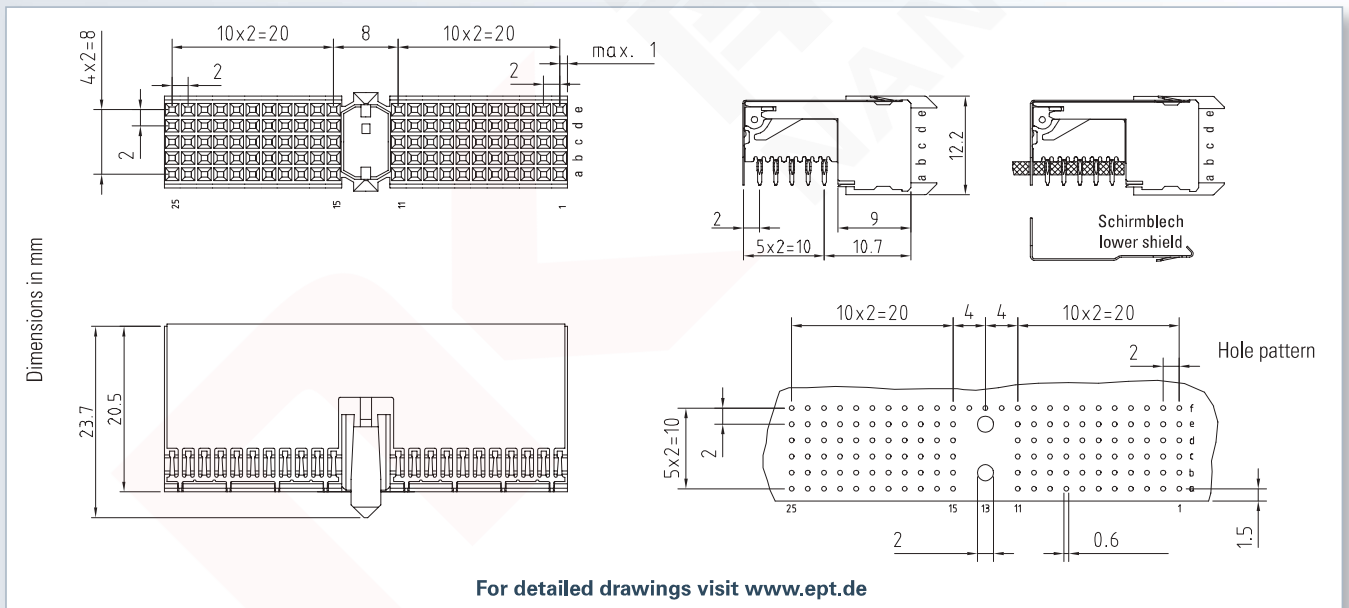
Operational current: 1.5 A

Packaging: Tray

Standard: IEC 61076-4-101



Technical Specifications on page 240



Accessories

- Processing tools p. 352
- Coding p. 304

Note

- CompactPCI J1/J4

Mating connector / Application:



Type A Male connector (p. 246)



Press-fit - Performance level II

No. of contacts	Description	Part number	PU (Tray)
110	without shielding	244-11000-15	35/140
110	with shielding (cPCI J1/J4)	244-11300-15	
90	with shielding (cPCI Telephony Spec)	244-11305-15	
–	Lower shield	244-11600-1	24/600

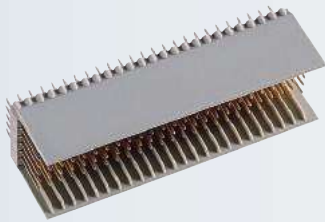
On request

- other contact surface
- also in THTR

hm2.0



Type B25 Male Connector



Type: Male connector straight with 5 rows

Termination: Press-fit

Number of contacts: 125, 175

Pitch: 2 mm

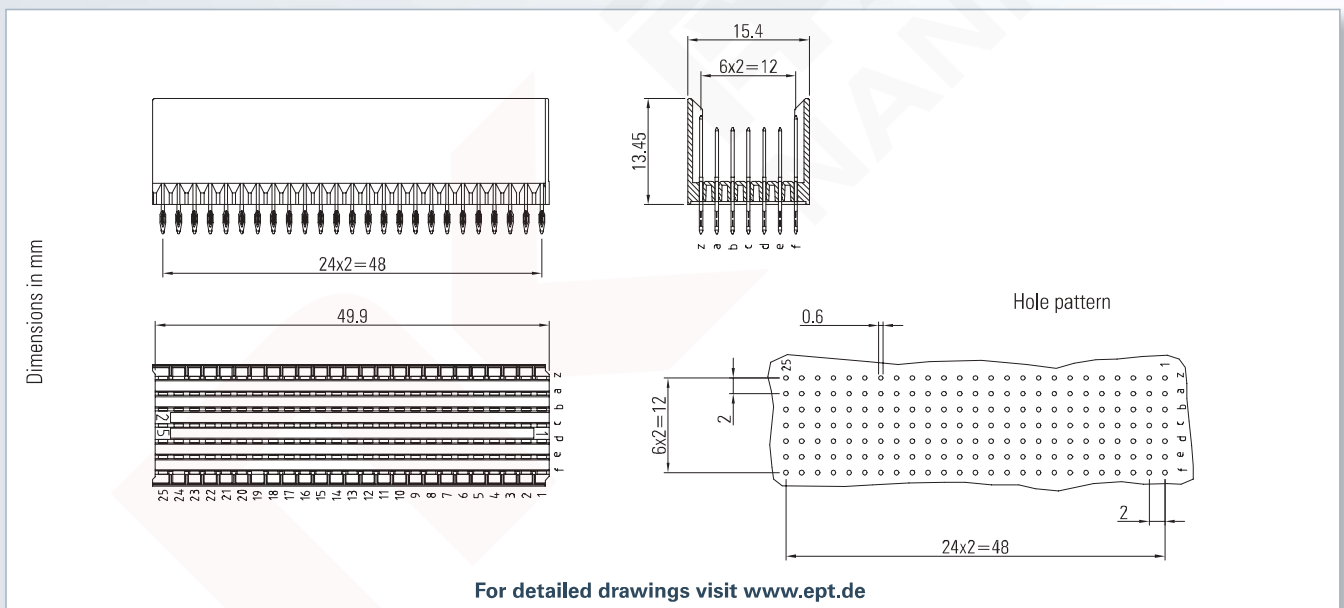
Operational current: 1,5 A

Packaging: Tube

Standard: IEC 61076-4-101



Technical Specifications on page 240



Accessories

- Processing tools p. 350
- Shroud p. 302

Note

- Pin length p. 245

Mating connector / Application:



Type B25 Female connector (p. 252)



Einpresstechnik - Gütestufe II

No. of contacts	Contact arrangement	PCB thickness > 2.2 mm	
		Part number	PU (Tube)
125	<p>Diagram showing 125 contacts (A) arranged in a 5x25 grid. Rows are labeled a-e, columns 1-25.</p>	243-21010-15	10/240
125	<p>Diagram showing 125 contacts (B) arranged in a 5x25 grid. Rows are labeled a-e, columns 1-25.</p>	243-21020-15	
175	<p>Diagram showing 175 contacts (C) arranged in a 5x35 grid. Rows are labeled a-e, columns 1-35.</p>	243-21310-15	
175	<p>Diagram showing 175 contacts (D) arranged in a 5x35 grid. Rows are labeled a-e, columns 1-35.</p>	243-21320-15	

On request

- contact arrangement
- other contact surface

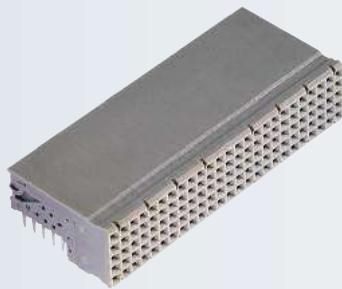
Ordering note

- PCB thickness 1.4 - 2.2 mm (Part number 243-21xxx-05)

hm2.0



Type B25 Female Connector



Type: Female connector 90°
with 5 rows

Termination: Press-fit

Number of contacts: 125

Pitch: 2 mm

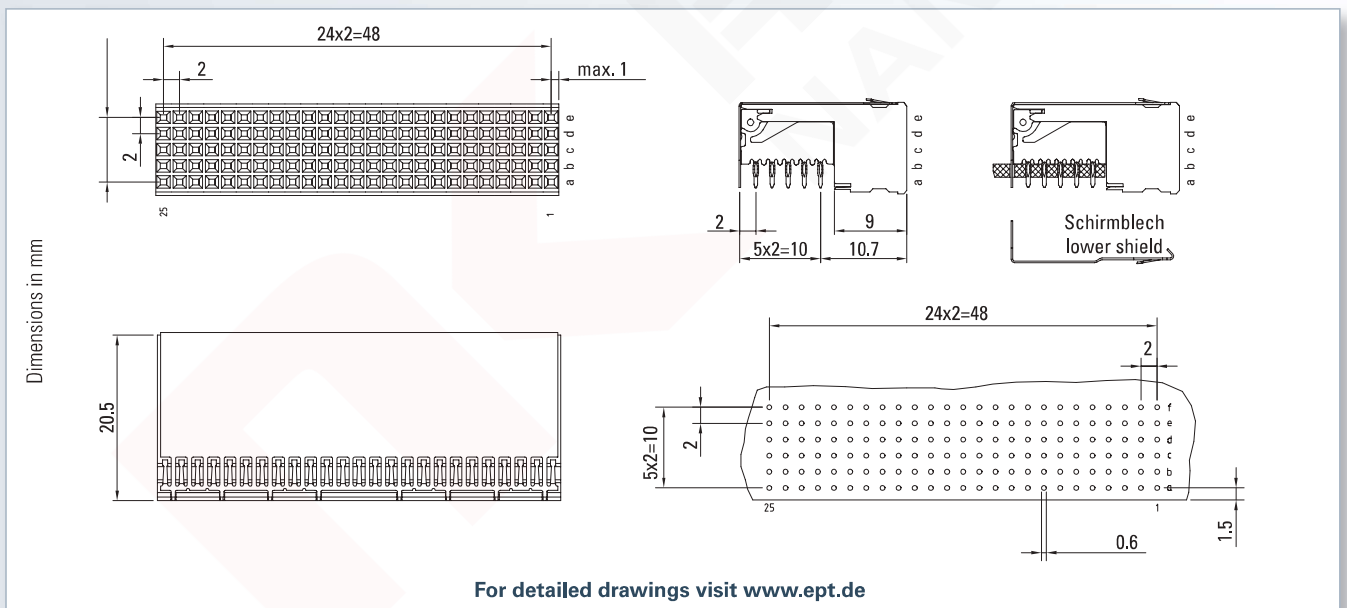
Operational current: 1.5 A

Packaging: Tray

Standard: IEC 61076-4-101



Technical Specifications on page 240



Accessories

- Processing tools p. 352

Mating connector / Application:



Type B25 Male connector (p. 250)



Press-fit - Performance level II

No. of contacts	Description	Part number	PU (Tray)
125	without shielding	244-21000-15	35/140
125	with shielding	244-21300-15	
–	Lower shield	244-21600-1	24/600

On request

- other contact surface
- also in THTR

hm2.0

Type B22 Male Connector



Type: Male connector straight with 5 rows

Termination: Press-fit

Number of contacts: 132, 154

Pitch: 2 mm

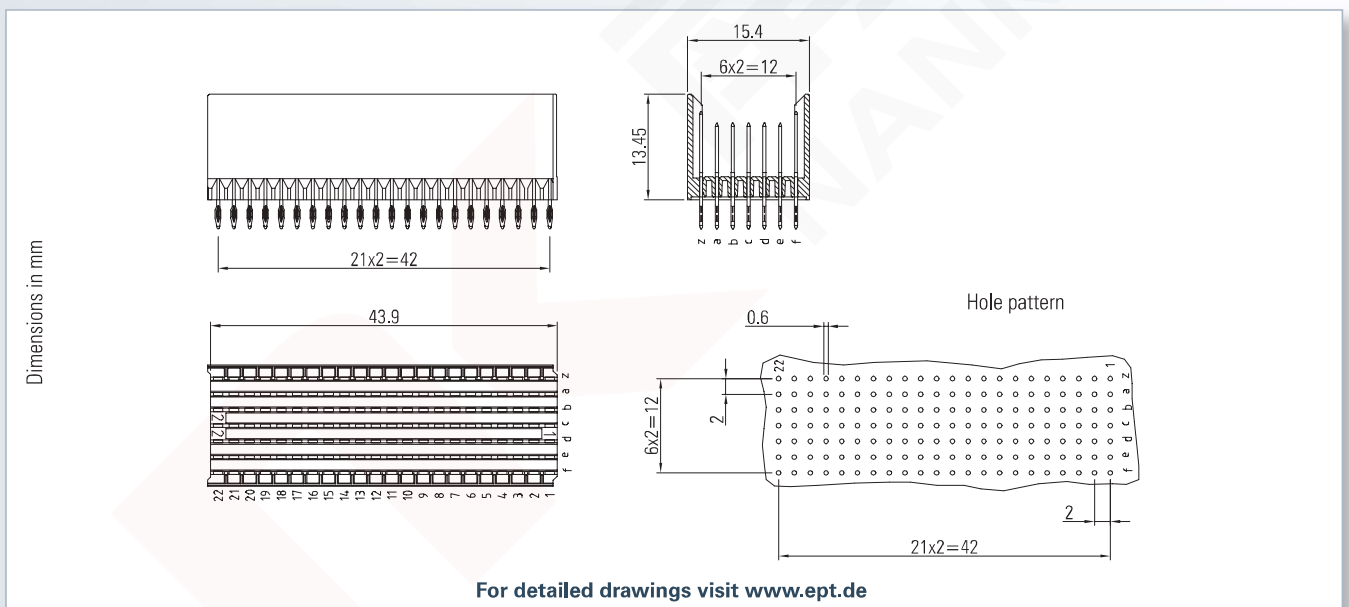
Operational current: 1.5 A

Packaging: Tube

Standard: IEC 61076-4-101



Technical Specifications on page 240



Accessories

- Processing tools p. 350
- Shroud p. 302

Note

- Pin lengths p. 245
- CompactPCI P2/P5

Mating connector / Application:



Type B22 Female connector (p. 256)



Press-fit - Performance level II

No. of contacts	Contact arrangement	PCB thickness > 2.2 mm	
		Part number	PU (Tube)
154		243-22310-15	
154		243-22311-15 cPCI Telephony Spec (P5)	11/264
154		243-22320-15 cPCI (P2/P5)	
154		243-22360-15F cPCI (P2/P5)	

On request

- contact arrangement
- other contact surface

Ordering note

- PCB thickness 1.4 - 2.2 mm
(Part number 243-22xxx-05)

hm2.0



Type B22 Female Connector



Type: Female connector 90° with 5 rows

Termination: Press-fit

Number of contacts: 110

Pitch: 2 mm

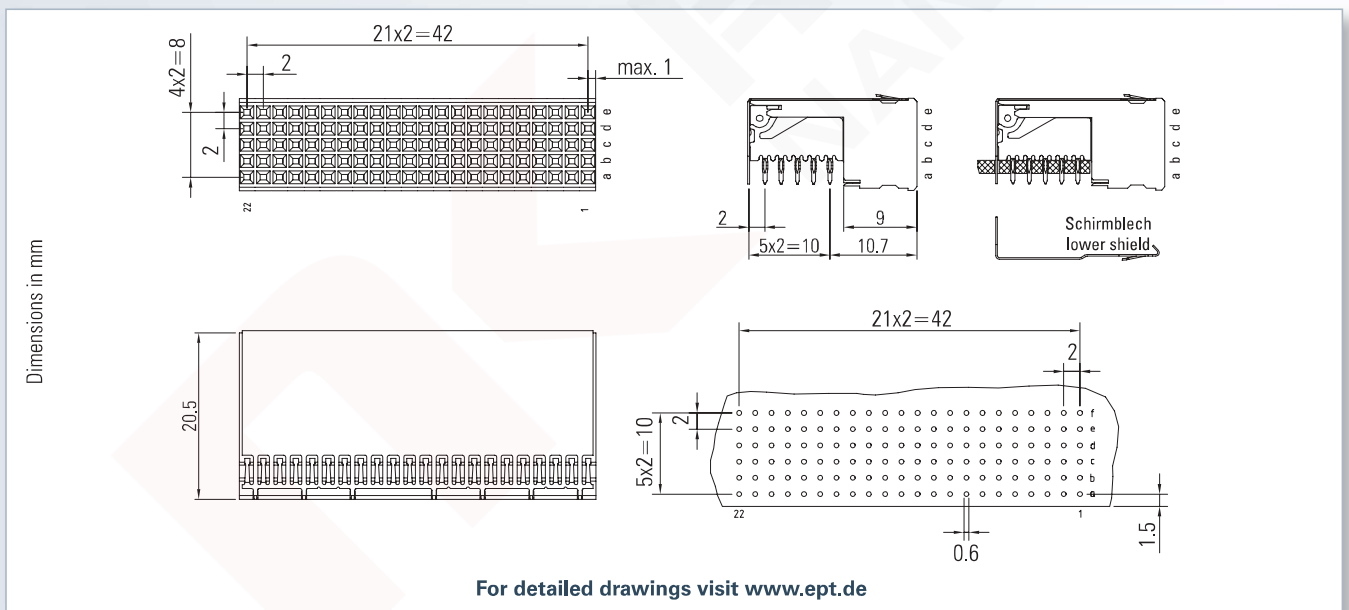
Operational current: 1.5 A

Packaging: Tray

Standard: IEC 61076-4-101



Technical Specifications on page 240



Accessories

- Processing tools p. 352

Note

- CompactPCI J2/J5

Mating connector / Application:



Type B22 Male connector (p. 254)



Press-fit - Performance level II

No. of contacts	Description	Part number	PU (Tray)
110	without shielding	244-22000-15	35/140
110	with shielding	244-22300-15	
—	Lower shield	244-22600-1	24/600

On request

- other contact surface
- also in THTR

hm2.0



Type B19 Male Connector



Type: Male connector straight with 5 rows

Termination: Press-fit

Number of contacts: 95, 133

Pitch: 2 mm

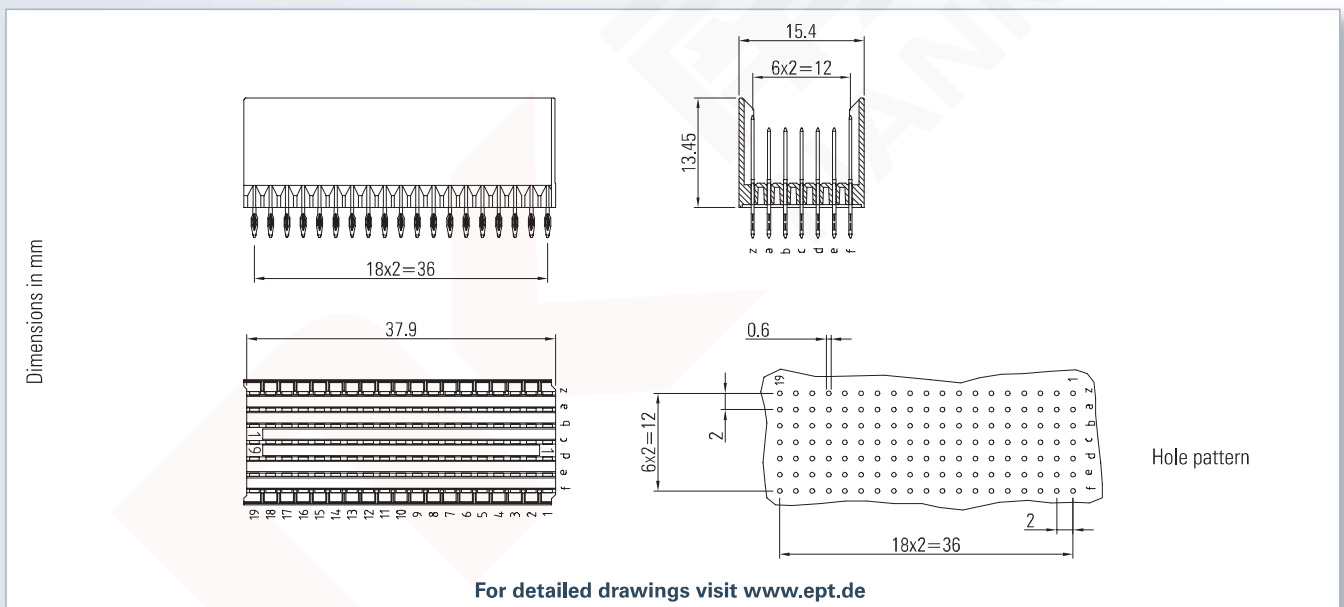
Operational current: 1.5 A

Packaging: Tube

Standard: IEC 61076-4-101



Technical Specifications on page 240



Accessories

- Processing tools p. 352
- Shroud p. 302

Note

- Pin lengths p. 245
- VME J0 and cPCI P3

Mating connector / Application:

 Type B19 Female connector (p. 260)



Press-fit - Performance level II

No. of contacts	Contact arrangement	PCB thickness > 2.2 mm	
		Part number	PU (Tube)
133		243-23310-15	
133		243-23320-15	13/312
133		243-23360-15F	
133		243-23700-15F	

On request

- contact arrangement
- other contact surface

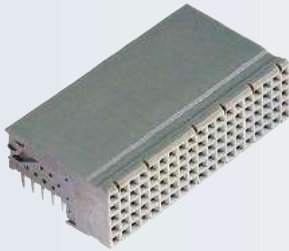
Ordering note

- PCB thickness 1.4 - 2.2 mm (Part number 243-23xxx-05)

hm2.0



Type B19 Female Connector



Type: Female connector 90° with 5 rows

Termination: Press-fit

Number of contacts: 95

Pitch: 2 mm

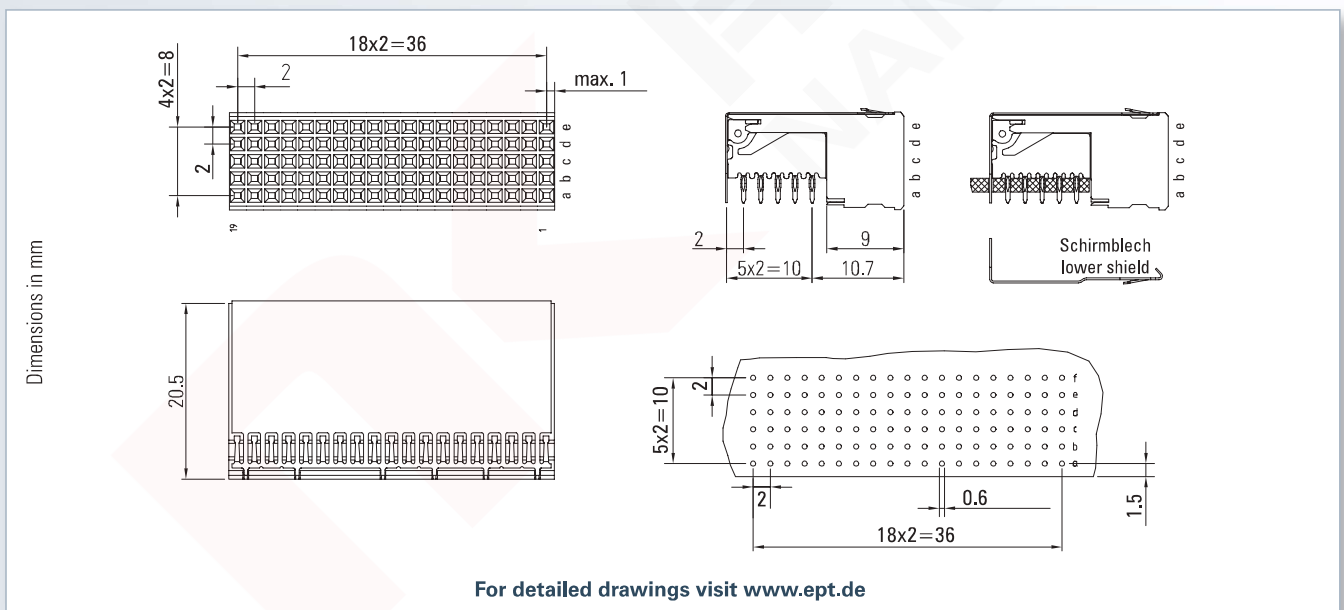
Operational current: 1.5 A

Packaging: Tray

Standard: IEC 61076-4-101



Technical Specifications on page 240



For detailed drawings visit www.ept.de

Accessories

- Processing tools p. 352

Note

- VME P0 and cPCI J3

Mating connector / Application:

 Type B19 Male connector (p. 258)



Press-fit - Performance level II

No. of contacts	Description	Part number	PU (Tray)
95	without shielding	244-23000-15	42/168
95	with shielding	244-23300-15	
—	lower shield	244-23600-1	24/600

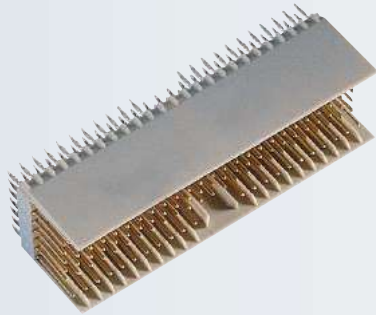
On request

- other contact surface
- also in THTR

hm2.0



Type AB25 Male Connector



Type: Male connector straight with 5 rows

Termination: Press-fit

Number of contacts: 125, 169

Pitch: 2 mm

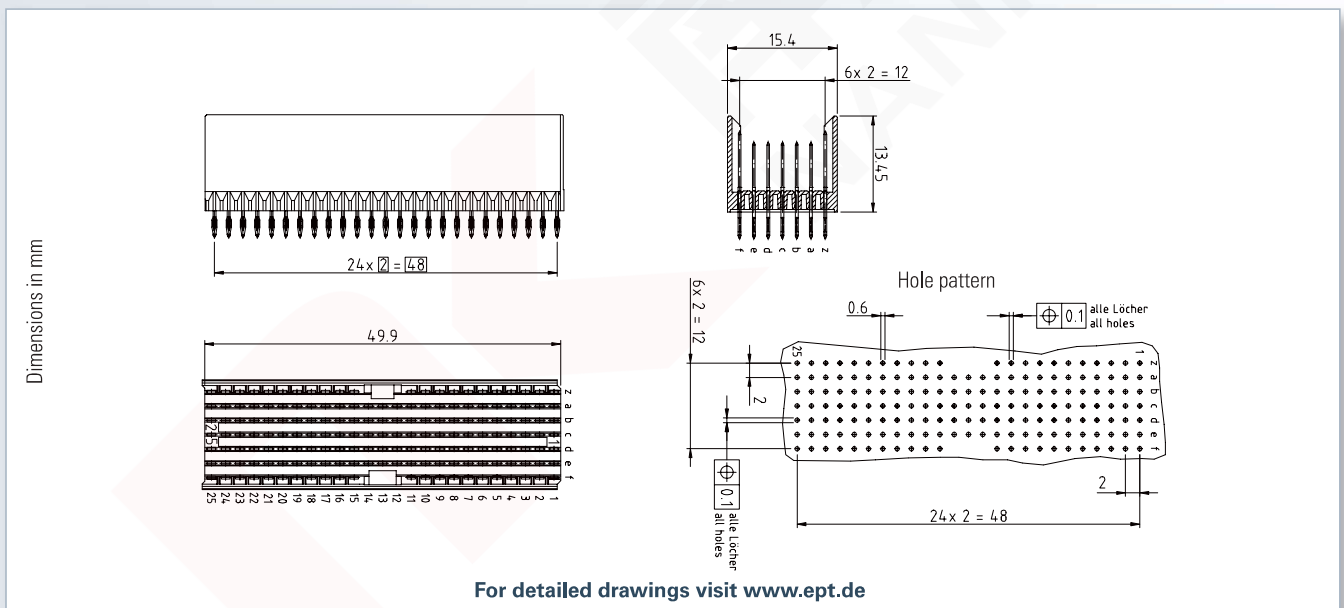
Operational current: 1.5 A

Packaging: Tube

Standard: IEC 61076-4-101



Technical Specifications on page 240



Accessories

- Processing tools p. 348
- Shroud p. 302

Note

- Pin lengths p. 245

Mating connector / Application:



Type AB25 Female connector (p. 264)



Press-fit - Performance level II

No. of contacts	Contact arrangement	PCB thickness > 2.2 mm	
		Part number	PU (Tube)
125		243-61010-15	
169		243-61310-15	10/240
169		243-61320-15	
169		243-61360-15F	

On request

- contact arrangement
- other contact surface

Ordering note

- PCB thickness 1.4 - 2.2 mm (Part number 243-61xxx-05)

hm2.0



Type AB25 Female Connector



Type: Female connector 90° with 5 rows

Termination: Press-fit

Number of contacts: 125

Pitch: 2 mm

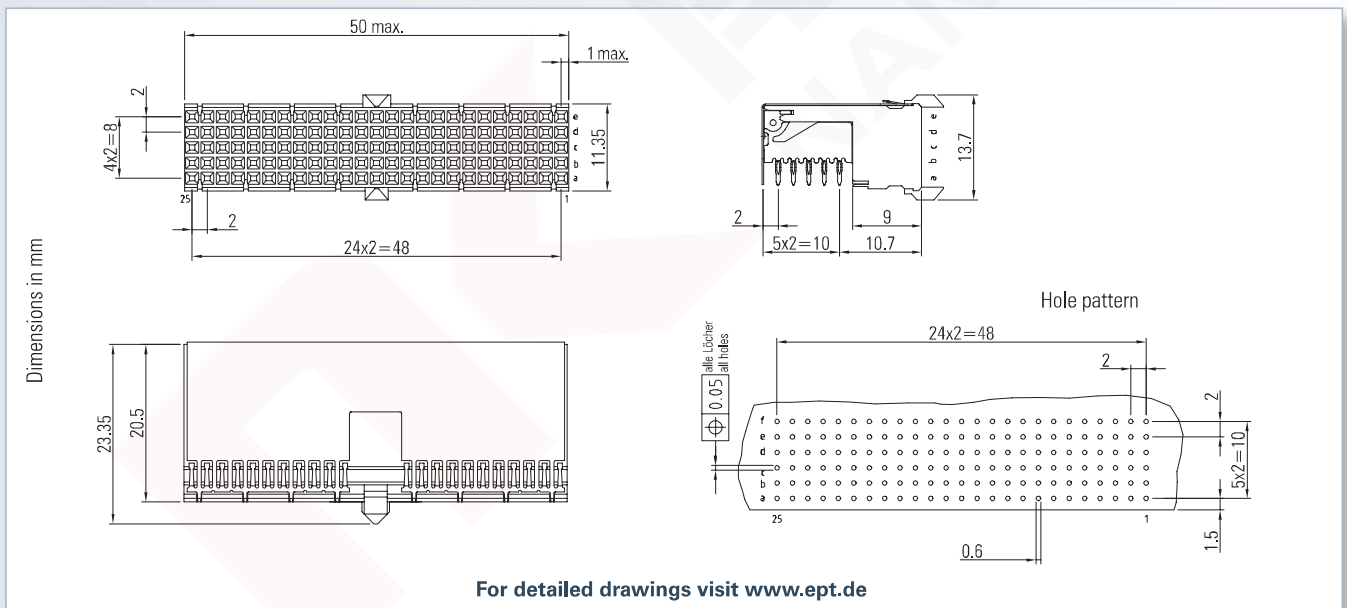
Operational current: 1,5 A

Packaging: Tray

Standard: IEC 61076-4-101



Technical Specifications on page 240



Accessories

- Processing tools p. 352

Mating connector / Application:



Type AB25 Male connector (p. 262)



Press-fit - Performance level II

No. of contacts	Description	Part number	PU (Tray)
125	without shielding	244-61000-15	35/140
125	with shielding	244-61300-15	
—	lower shield	244-11600-1	24/600

On request

- other contact surface
- also in THTR

hm2.0



Type AB22 Male Connector



Type: Male connector straight with 5 rows

Termination: Press-fit

Number of contacts: 110, 146

Pitch: 2 mm

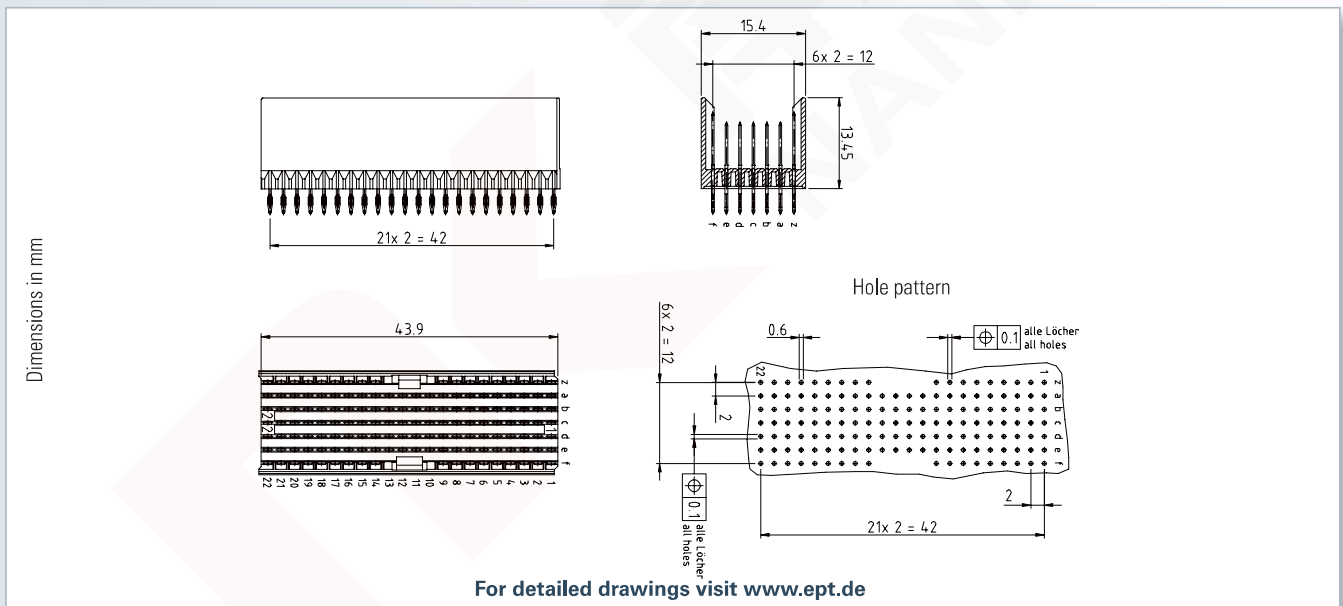
Operational current: 1,5 A

Packaging: Tube

Standard: IEC 61076-4-101



Technical Specifications on page 240



Accessories

- Processing tools p. 348
- Shroud p. 302

Note

- Pin lengths p. 245

Mating connector / Application:



Type AB22 Female connector (p. 268)



Press-fit - Performance level II

No. of contacts	Contact arrangement	PCB thickness > 2.2 mm	
		Part number	PU (Tube)
110		243-62010-15	
146		243-62310-15	11/264
146		243-62320-15	
146		243-62360-15F	

On request

- contact arrangement
- other contact surface

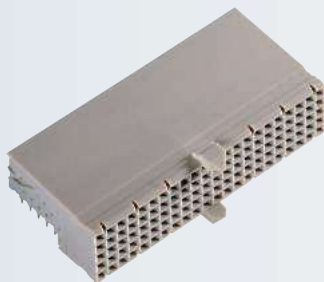
Ordering note

- PCB thickness 1.4 - 2.2 mm (Part number 243-62xxx-05)

hm2.0



Type AB22 Female Connector



Type: Female connector 90° with 5 rows

Termination: Press-fit

Number of contacts: 110

Pitch: 2 mm

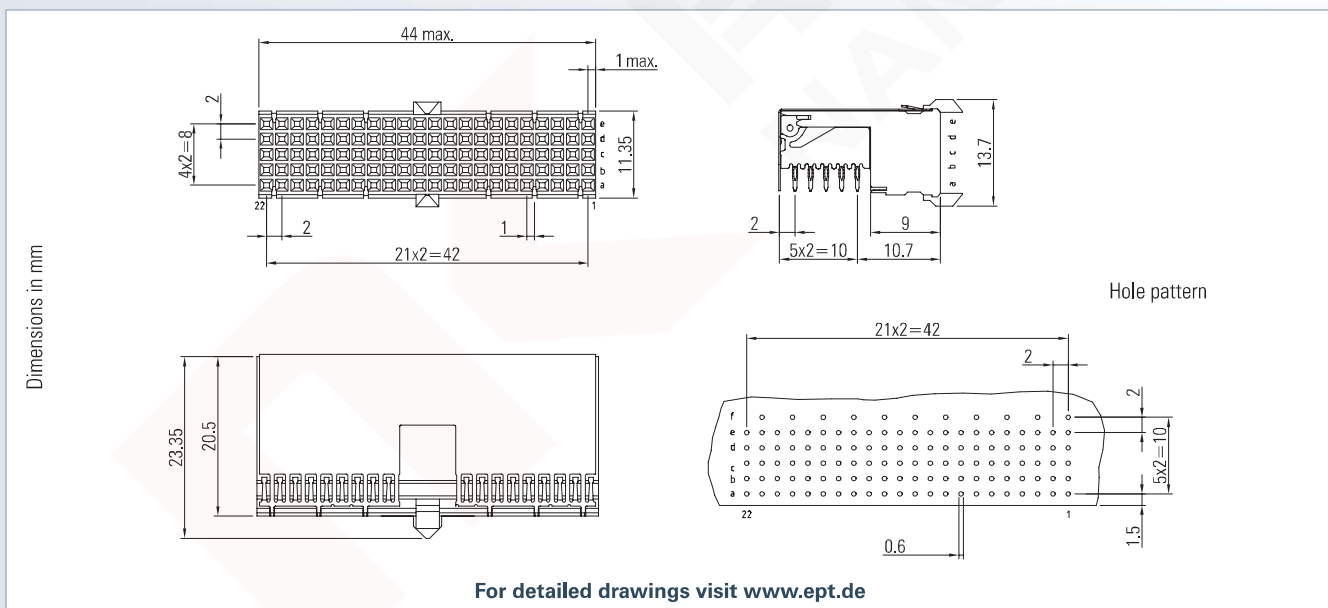
Operational current: 1.5 A

Packaging: Tray

Standard: IEC 61076-4-101



Technical Specifications on page 240



Accessories

- Processing tools p. 352

Note

- CompactPCI RJ5

Mating connector / Application:



Type AB22 Male connector (p. 266)



Press-fit - Performance level II

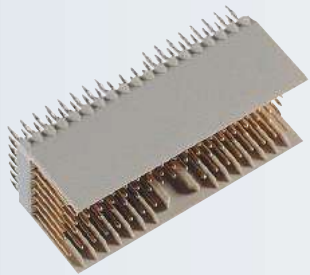
No. of contacts	Description	Part number	PU (Tray)
110	without shielding	244-62000-15	35/140
110	with shielding	244-62300-15	

On request

- other contact surface
- also in THTR

hm2.0

Type AB19 Male Connector



Type: Male connector straight with 5 rows

Termination: Press-fit

Number of contacts: 95, 127

Pitch: 2 mm

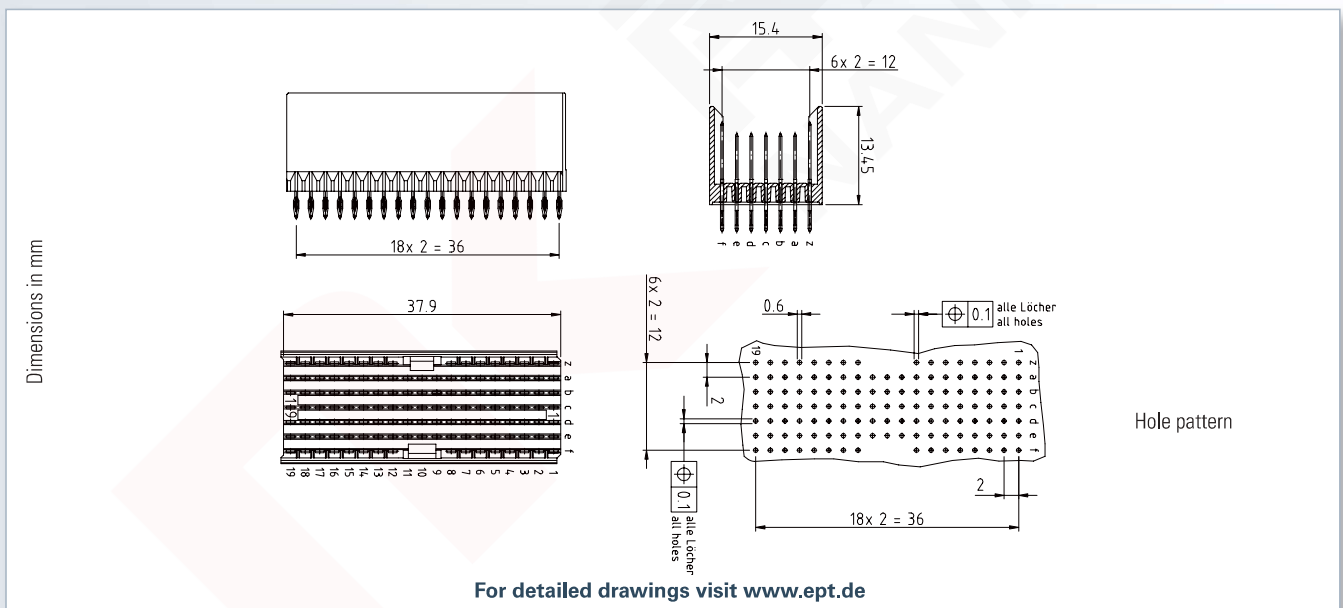
Operational current: 1.5 A

Packaging: Tube

Standard: IEC 61076-4-101



Technical Specifications on page 240



Accessories

- Processing tools p. 348
- Shroud p. 302

Note

- Pin lengths p. 245

Mating connector / Application:



Type AB19 Female connector (p. 272)



Press-fit - Performance level II

No. of contacts	Contact arrangement	PCB thickness > 2.2 mm	
		Part number	PU (Tube)
95		243-63010-15	
127		243-63310-15	13/312
127		243-63320-15	
127		243-63360-15F	

On request

- other contact surface
- also in THTR

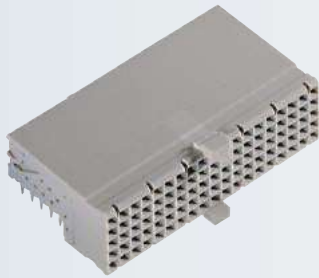
Ordering note

- PCB thickness 1.4 - 2.2 mm (Part number 243-63xxx-05)

hm2.0



Type AB19 Female Connector



Type: Female connector 90° with 5 rows

Termination: Press-fit

Number of contacts: 95

Pitch: 2 mm

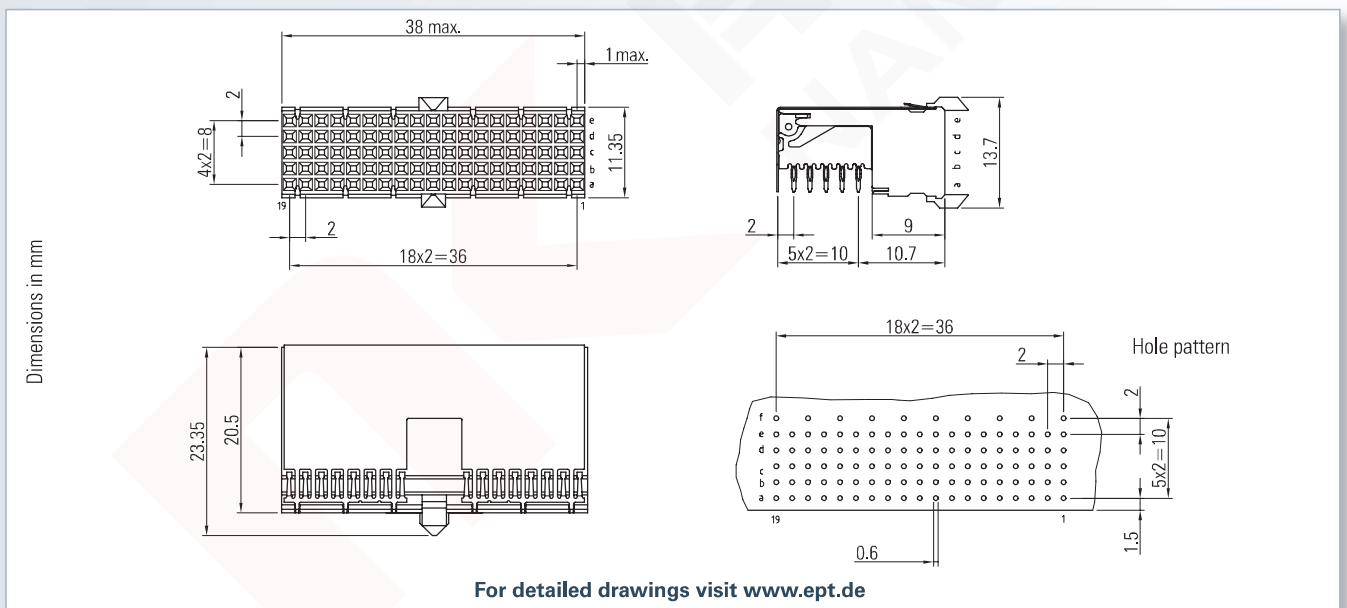
Operational current: 1.5 A

Packaging: Tray

Standard: IEC 61076-4-101



Technical Specifications on page 240



Accessories

- Processing tools p. 352

Note

- CompactPCI RJ3

Mating connector / Application:



Type AB19 Male connector (p. 270)



Press-fit - Performance level II

No. of contacts	Description	Part number	PU (Tray)
95	without shielding	244-63000-15	35/140
95	with shielding	244-63300-15	

On request

- other contact surface
- also in THTR

hm2.0



Type C Male Connector



Type: Male connector straight with 5 rows

Termination: Press-fit

Number of contacts: 55, 77

Pitch: 2 mm

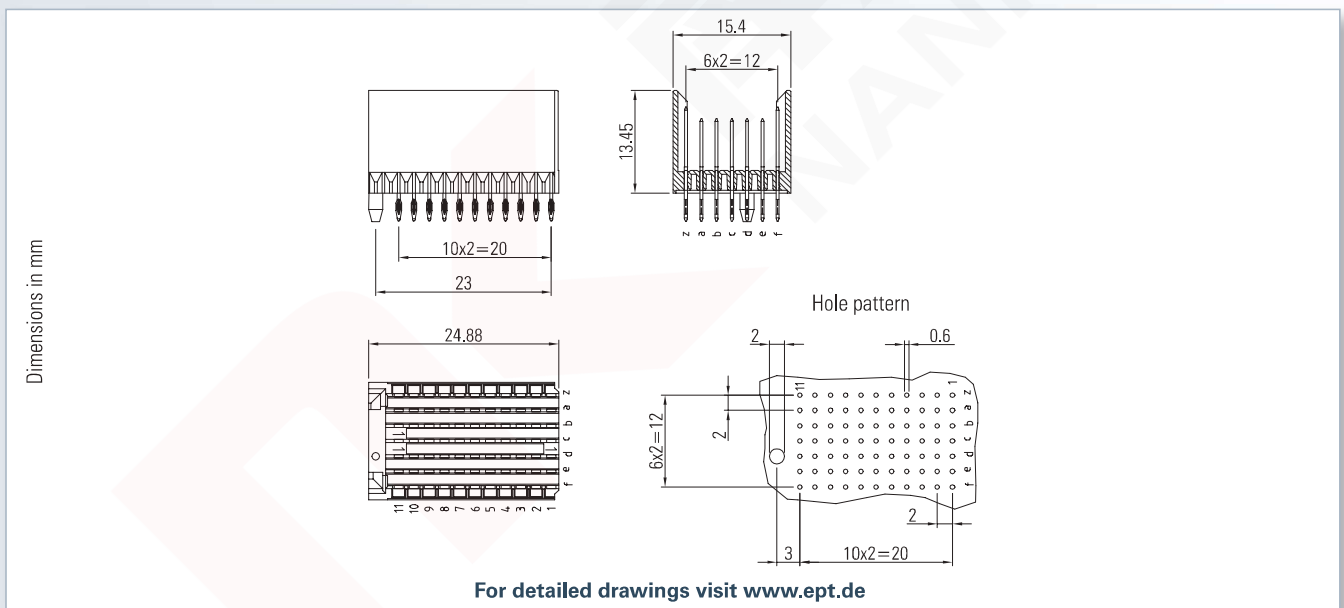
Operational current: 1.5 A

Packaging: Tube

Standard: IEC 61076-4-101



Technical Specifications on page 240



Accessories

- Processing tools p. 352
- Shroud p. 302

Note

- Pin lengths p. 245

Mating connector / Application:

 Type C Female connector (p. 276)



Press-fit - Performance level II

No. of contacts	Contact arrangement	PCB thickness > 2.2 mm	
		Part number	PU (Tube)
55		243-31010-15	
55		243-31020-15	
77		243-31310-15	20/480
77		243-31320-15	

On request

- contact arrangement
- other contact surface

Ordering note

- PCB thickness 1.4 - 2.2 mm
(Part number 243-31xxx-05)

hm2.0



Type C Female Connector



Type: Female connector 90°
with 5 rows

Termination: Press-fit

Number of contacts: 55

Pitch: 2 mm

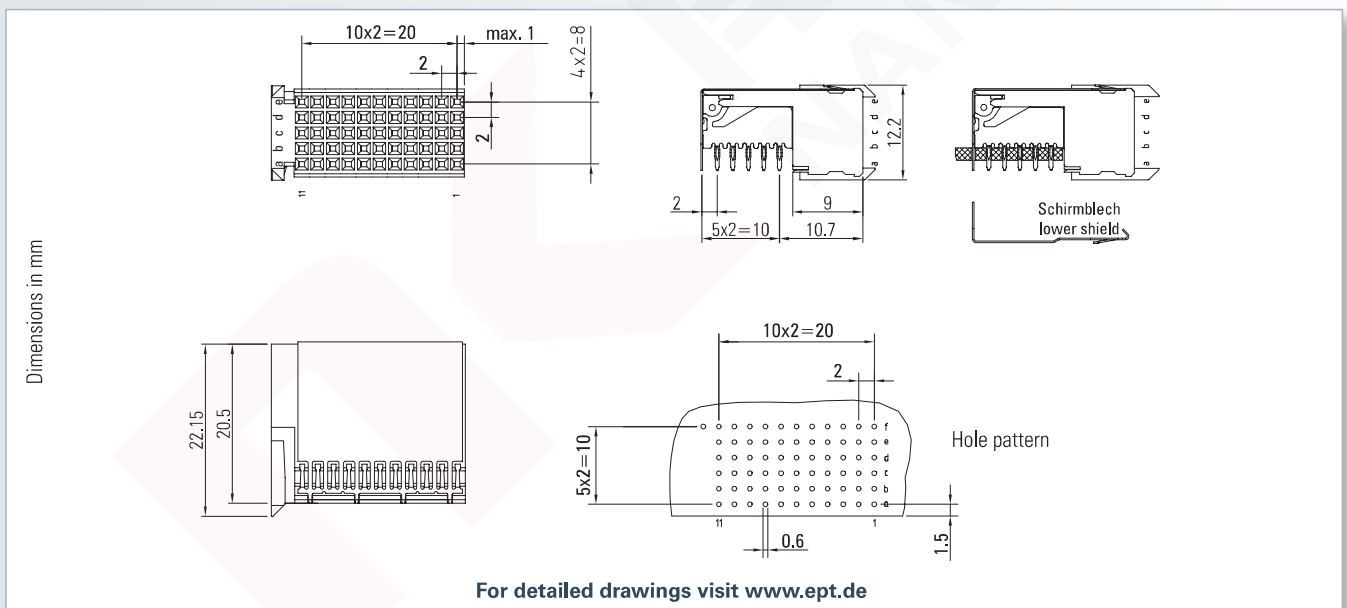
Operational current: 1.5 A

Packaging: Tray

Standard: IEC 61076-4-101



Technical Specifications on page 240



Accessories

- Processing tools p. 352

Mating connector / Application:



Type C Male connector (p. 274)



Press-fit - Performance level II

No. of contacts	Description	Part number	PU (Tray)
55	without shielding	244-31000-15	70/280
55	with shielding	244-31300-15	
—	lower shield	244-31600-1	48/600

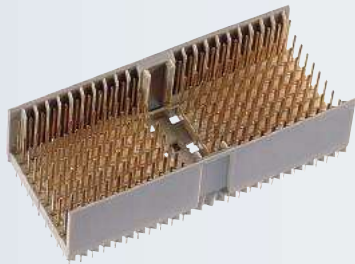
On request

- other contact surface
- also in THTR

hm2.0



Type D Male Connector



Type: Male connector straight with 8 rows

Termination: Press-fit

Number of contacts: 176, 220

Pitch: 2 mm

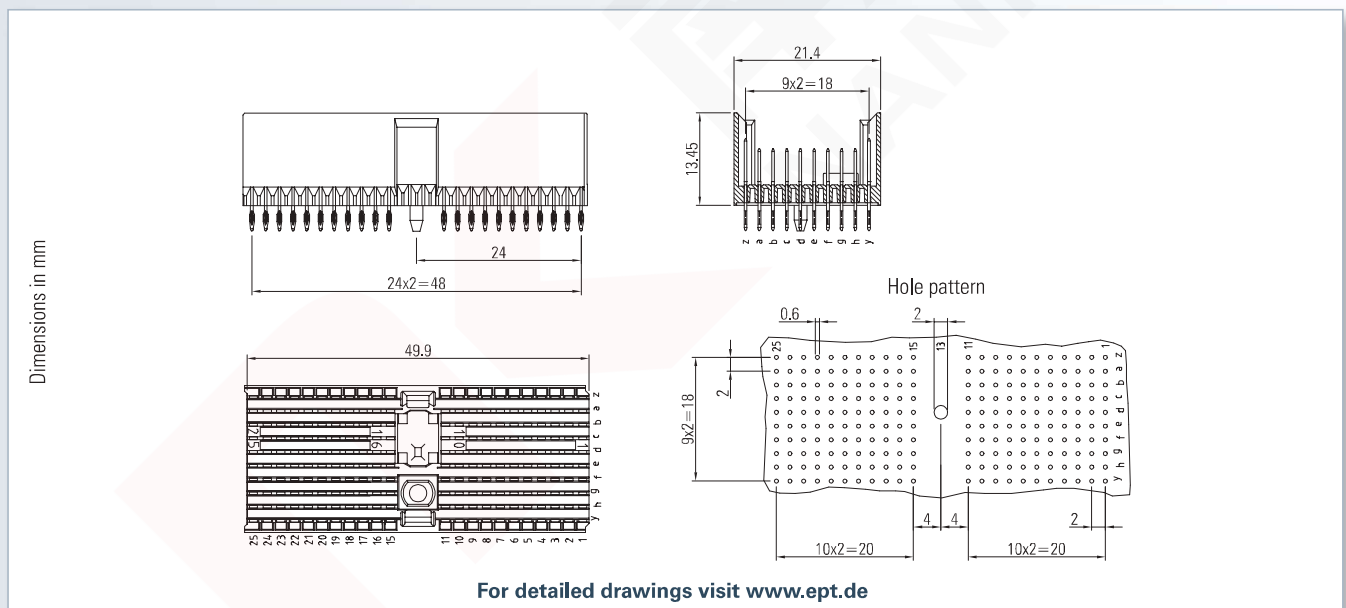
Operational current: 1.5 A

Packaging: Tube

Standard: IEC 61076-4-101



Technical Specifications on page 240



Accessories

- Processing tools p. 352
- Coding p. 304

Note

- Pin lengths p. 245

Mating connector / Application:



Type D Female connector (p. 280)



Press-fit - Performance level II

No. of contacts	Contact arrangement	PCB thickness > 2.2 mm	
		Part number	PU (Tube)
176		245-11010-15	10/160
220		245-11310-15	

On request

- contact arrangement
- other contact surface

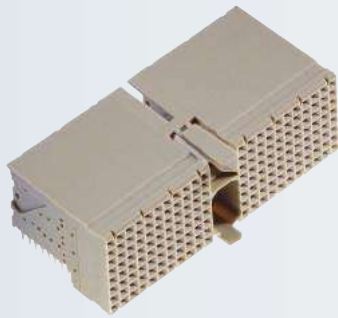
Ordering note

- PCB thickness 1.4 - 2.2 mm (Part number 245-11xxx-05)

hm2.0



Type D Female Connector



Type: Female connector 90° with 8 rows

Termination: Press-fit

Number of contacts: 176

Pitch: 2 mm

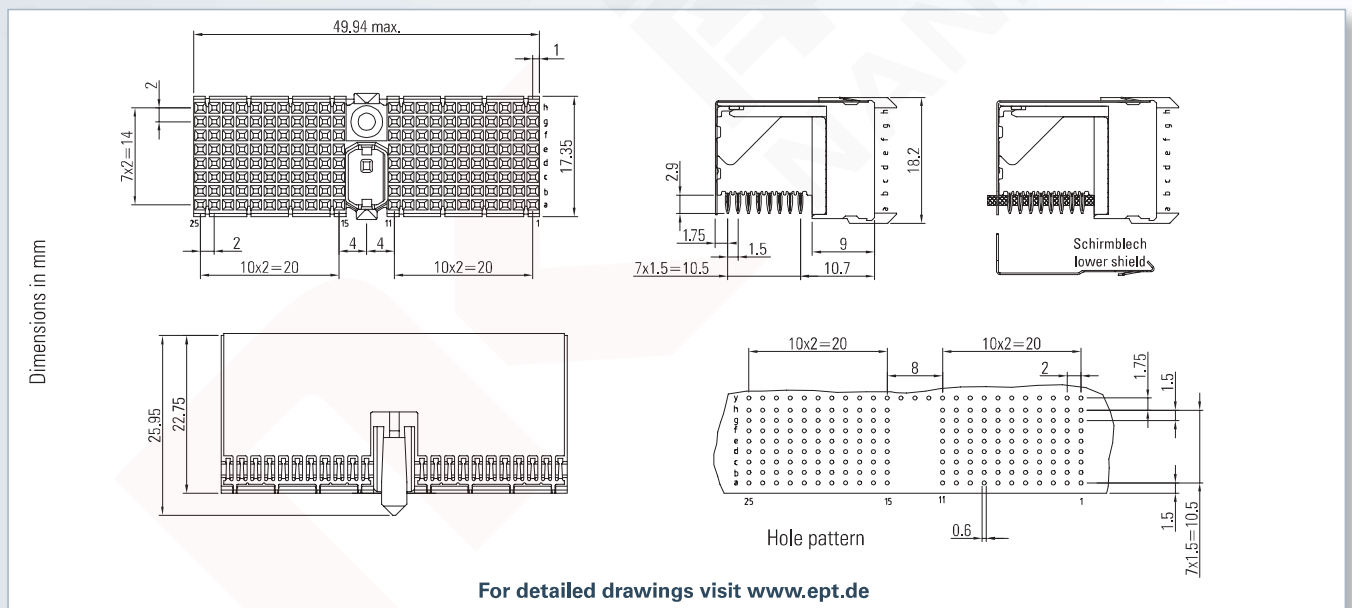
Operational current: 1.5 A

Packaging: Tray

Standard: IEC 61076-4-101



Technical Specifications on page 240



Accessories

- Processing tools p. 352
- Coding p. 304

Mating connector / Application:



Type D Male connector (p. 278)



Press-fit - Performance level II

No. of contacts	Description	Part number	PU (Tray)
176	without shielding	246-11000-15	30/90
176	with shielding	246-11300-15	
—	lower shield	246-11600-1	24/600

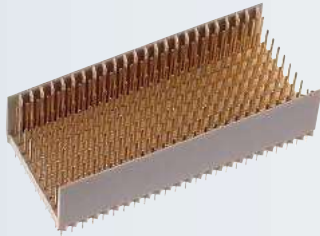
On request

- other contact surface

hm2.0



Type E Male Connector



Type: Male connector straight with 8 rows

Termination: Press-fit

Number of contacts: 200, 250

Pitch: 2 mm

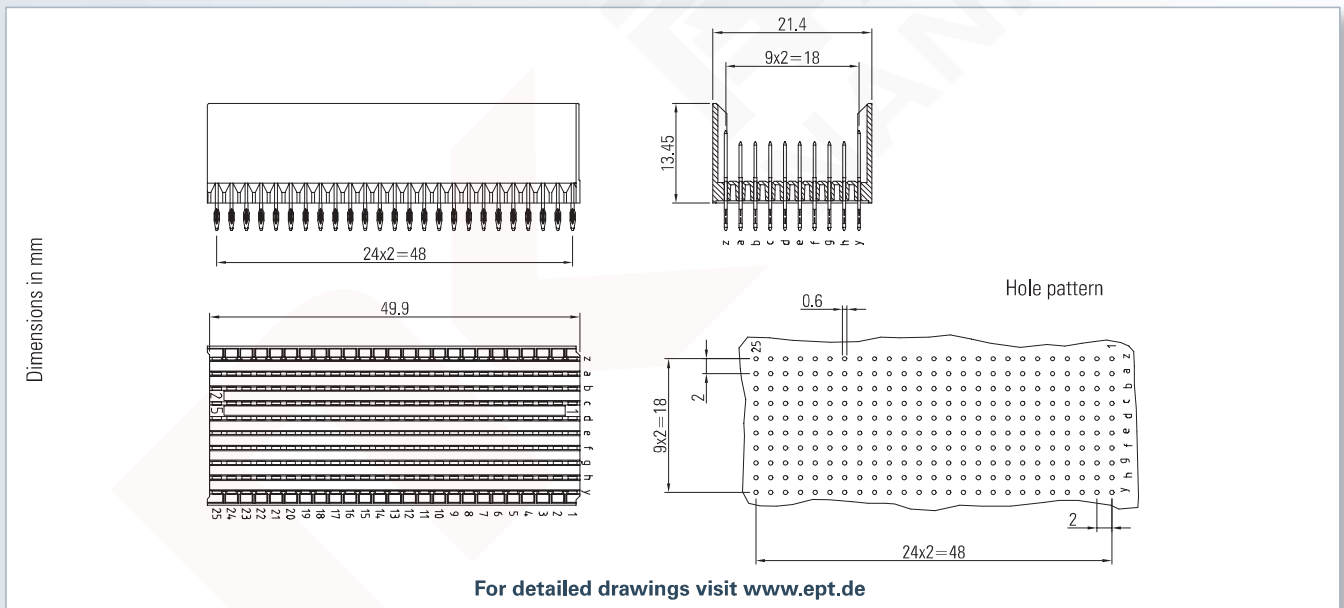
Operational current: 1,5 A

Packaging: Tube

Standard: IEC 61076-4-101



Technical Specifications on page 240



Accessories

- Processing tools p. 350

Note

- Pin lengths p. 245

Mating connector / Application:



Type E Female connector (p. 284)



Press-fit - Performance level II

No. of contacts	Contact arrangement	PCB thickness > 2.2 mm	
		Part number	PU (Tube)
200		245-21010-15	10/160
250		245-21310-15	

On request

- contact arrangement
- other contact surface

Ordering note

- PCB thickness 1.4 - 2.2 mm
(Part number 245-21xxx-05)

hm2.0



Type E Female Connector



Type: Female connector 90° with 8 rows

Termination: Press-fit

Number of contacts: 200

Pitch: 2 mm

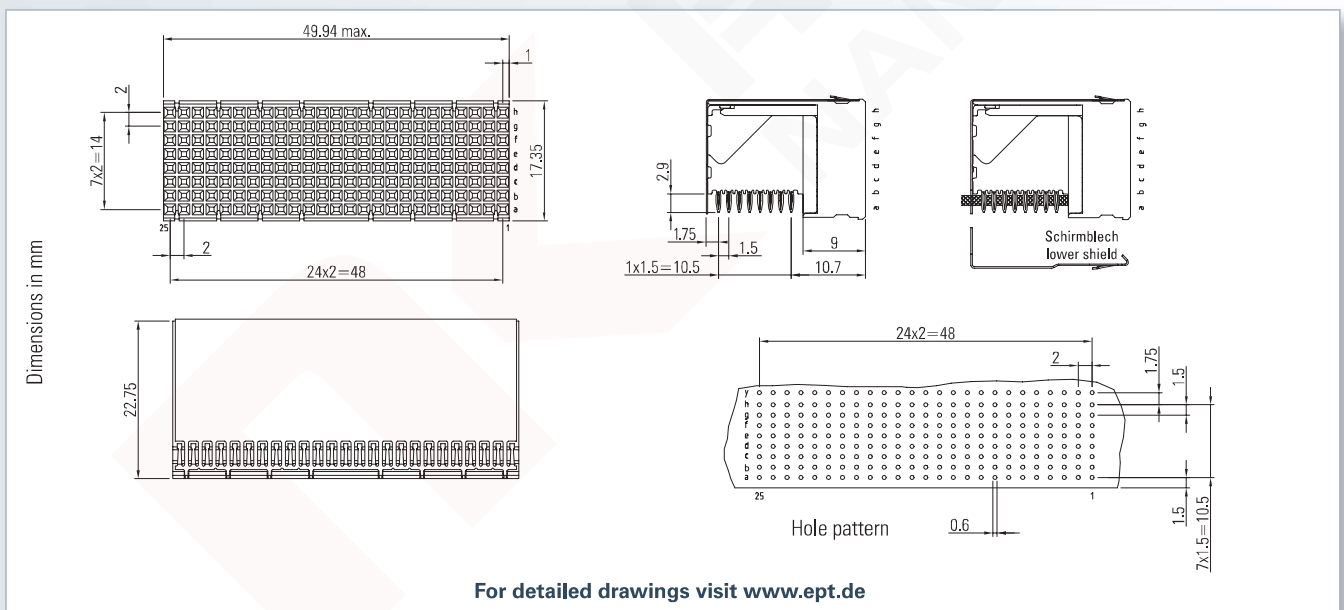
Operational current: 1,5 A

Packaging: Tray

Standard: IEC 61076-4-101



Technical Specifications on page 240



For detailed drawings visit www.ept.de

Accessories

- Processing tools p. 352

Mating connector / Application:



Type E Male connector (p. 282)



Press-fit - Performance level II

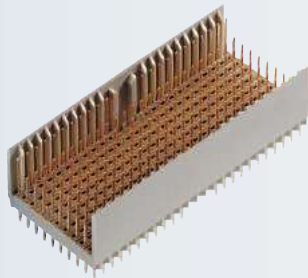
No. of contacts	Description	Part number	PU (Tray)
200	without shielding	246-21000-15	30/90
200	with shielding	246-21300-15	
—	lower shield	246-21600-1	24/600

On request
 • other contact surface

hm2.0



Type DE Male Connector



Type: Male connector straight with 8 rows

Termination: Press-fit

Number of contacts: 200, 244

Pitch: 2 mm

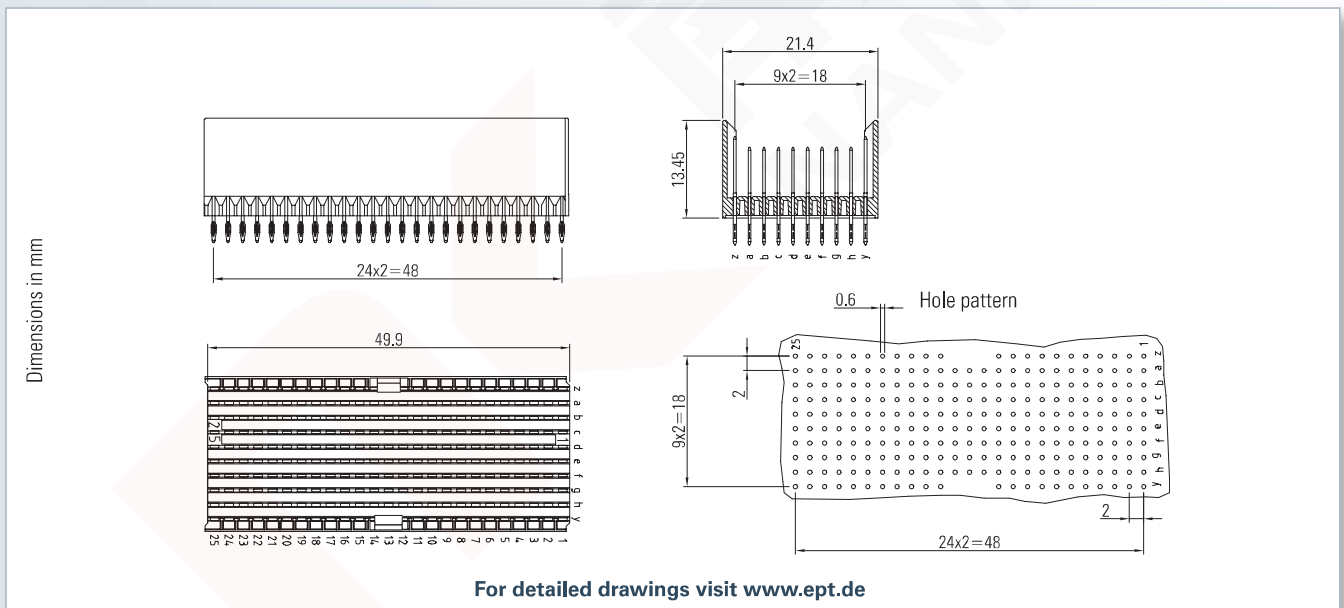
Operational current: 1.5 A

Packaging: Tube

Standard: IEC 61076-4-101



Technical Specifications on page 240



Accessories

- Processing tools p. 348

Note

- Pin lengths p. 245

Mating connector / Application:

-  Type DE Female connector (p. 288)



Press-fit - Performance level II

No. of contacts	Contact arrangement	PCB thickness > 2.2 mm	
		Part number	PU (Tube)
200		245-61010-15	10/160
244		245-61310-15	

On request

- contact arrangement
- other contact surface

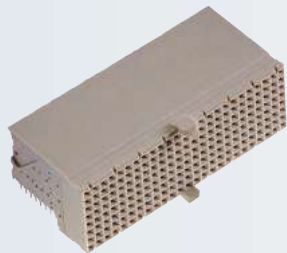
Ordering note

- PCB thickness 1.4 - 2.2 mm (Part number 245-61xxx-05)

hm2.0



Type DE Female Connector



Type: Female connector 90° with 8 rows

Termination: Press-fit

Number of contacts: 200

Pitch: 2 mm

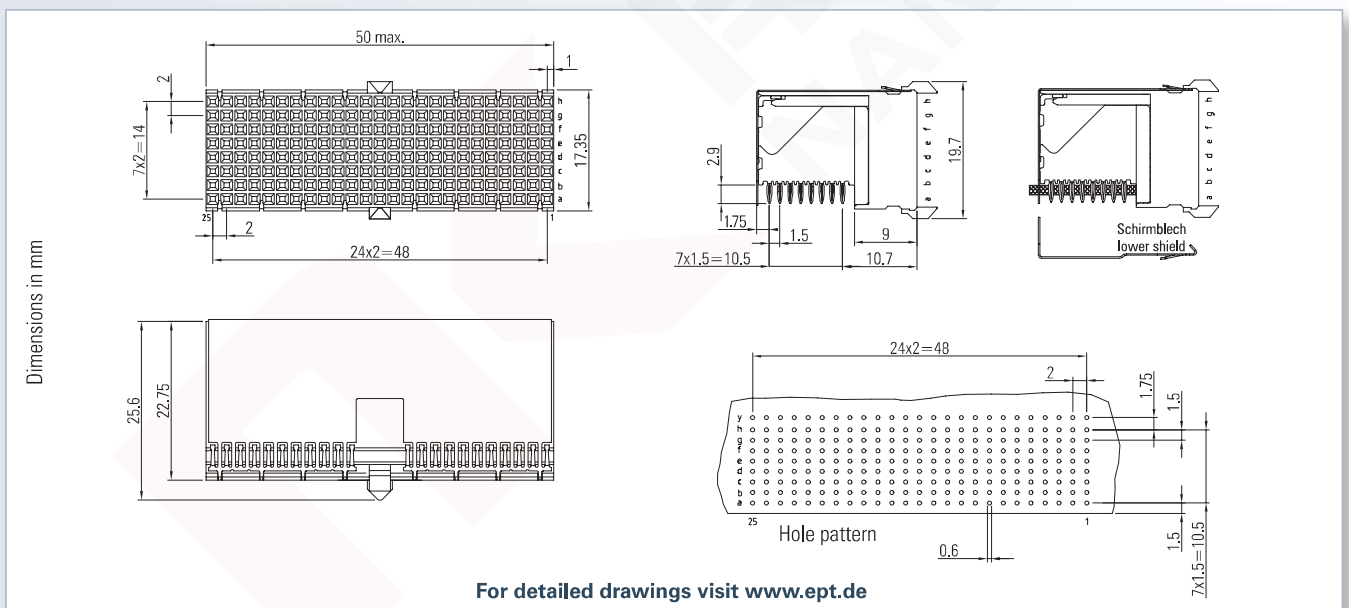
Operational current: 1.5 A

Packaging: Tray

Standard: IEC 61076-4-101



Technical Specifications on page 240



For detailed drawings visit www.ept.de

Accessories

- Processing tools p. 352

Mating connector / Application:



Type DE Male connector (p. 286)



Press-fit - Performance level II

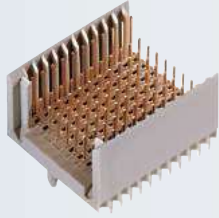
No. of contacts	Description	Part number	PU (Tray)
200	without shielding	246-61000-15	30/90
200	with shielding	246-61300-15	
—	lower shield	246-11600-1	24/600

On request
 • other contact surface

hm2.0



Type F Male Connector



Type: Male connector straight with 8 rows

Termination: Press-fit

Number of contacts: 88, 110

Pitch: 2 mm

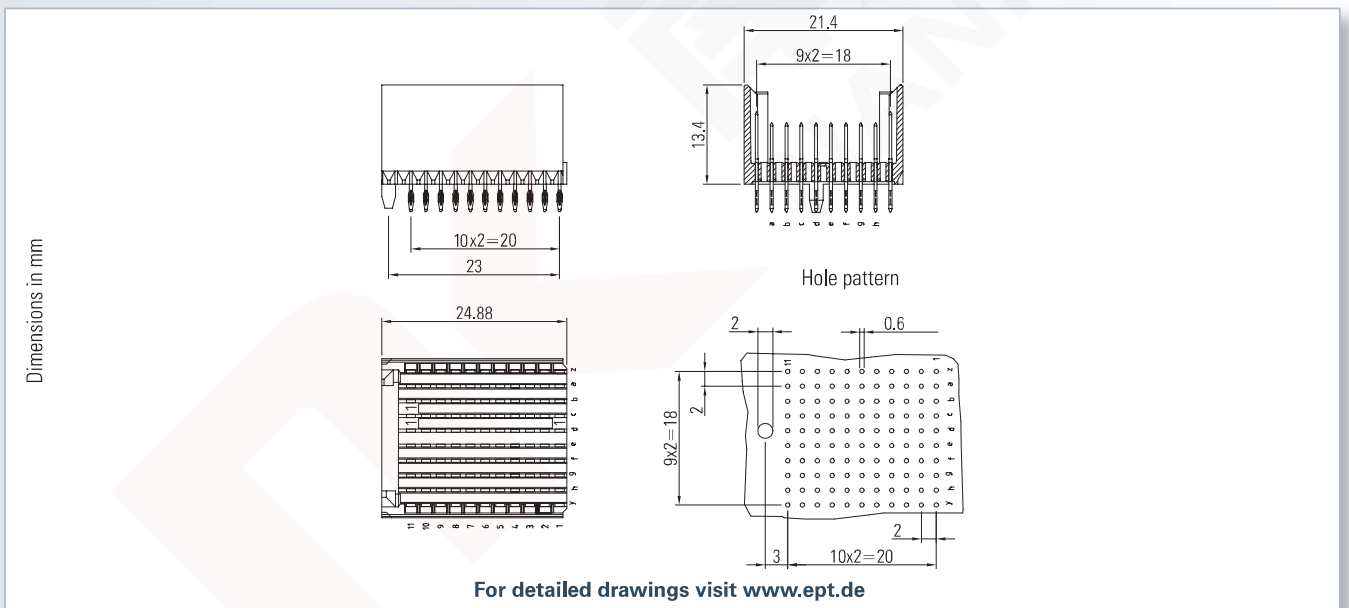
Operational current: 1.5 A

Packaging: Tube

Standard: IEC 61076-4-101



Technical Specifications on page 240



Accessories

- Processing tools p. 350

Note

- Pin lengths p. 245

Mating connector / Application:

 Type F Female connector (p. 292)



Press-fit - Performance level II

No. of contacts	Contact arrangement	PCB thickness > 2.2 mm	
		Part number	PU (Tube)
88		245-31010-15	20/320
110		245-31310-15	

On request

- contact arrangement
- other contact surface

Ordering note

- PCB thickness 1.4 - 2.2 mm (Part number 245-31xxx-05)



Press-fit - Performance level II

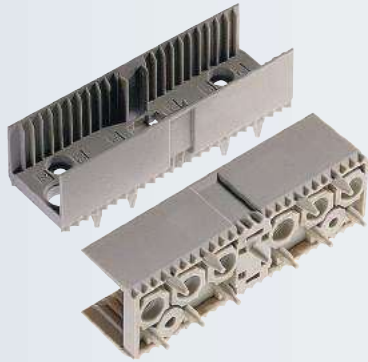
No. of contacts	Description	Part number	PU (Tray)
88	without shielding	246-31000-15	60/180
88	with shielding	246-31300-15	
—	lower shield	246-31600-1	24/600

On request
 • other contact surface

hm2.0



Type L Male Connector



Type: Male connector straight

Termination: Press-fit

Number of contacts: 6

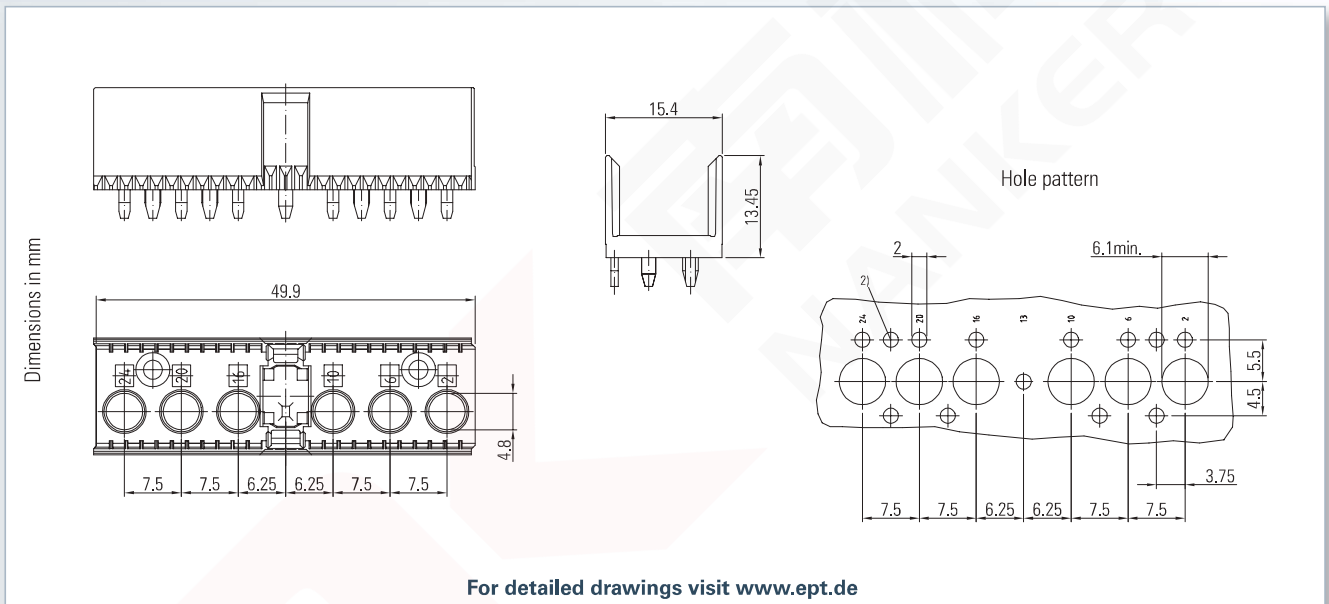
Pitch: 2 mm

Packaging: Bulk

Standard: IEC 61076-4-101



Technical Specifications on page 240



No. of contacts	Description	Part number	PU (Bulk)
6		243-51000	750

Mating connector / Application:



Type L Female connector (p. 295)

Type L Female Connector



Type: Female connector 90°

Termination: Press-fit

Number of contacts: 6

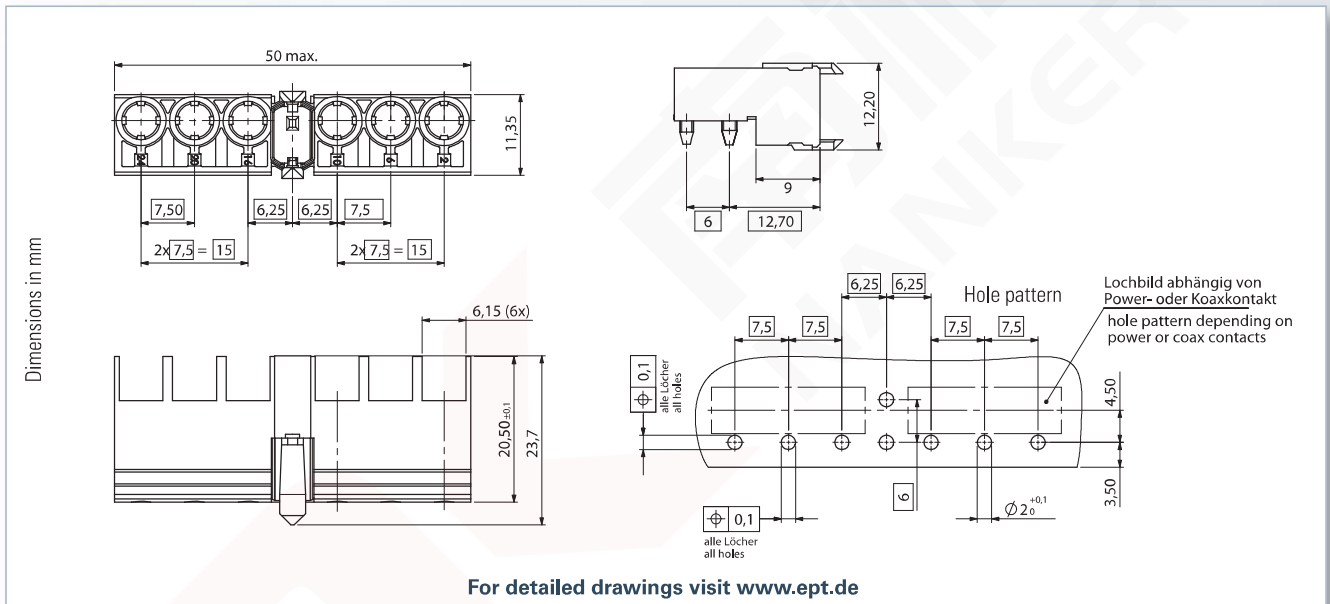
Pitch: 2 mm

Packaging: Bulk

Standard: IEC 61076-4-101



Technical Specifications on page 240



No. of contacts	Description	Part number	PU (Bulk)
6	without shielding	244-51000	140

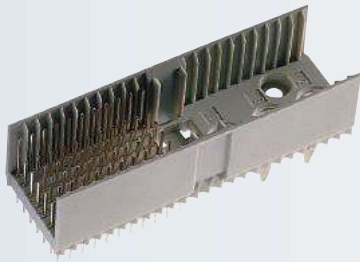
Mating connector / Application:

Type L Male connector (p. 294)

hm2.0



Type M Male Connector



Type: Male connector straight with 5 rows

Termination: Press-fit

Number of contacts: 55, 77

Pitch: 2 mm

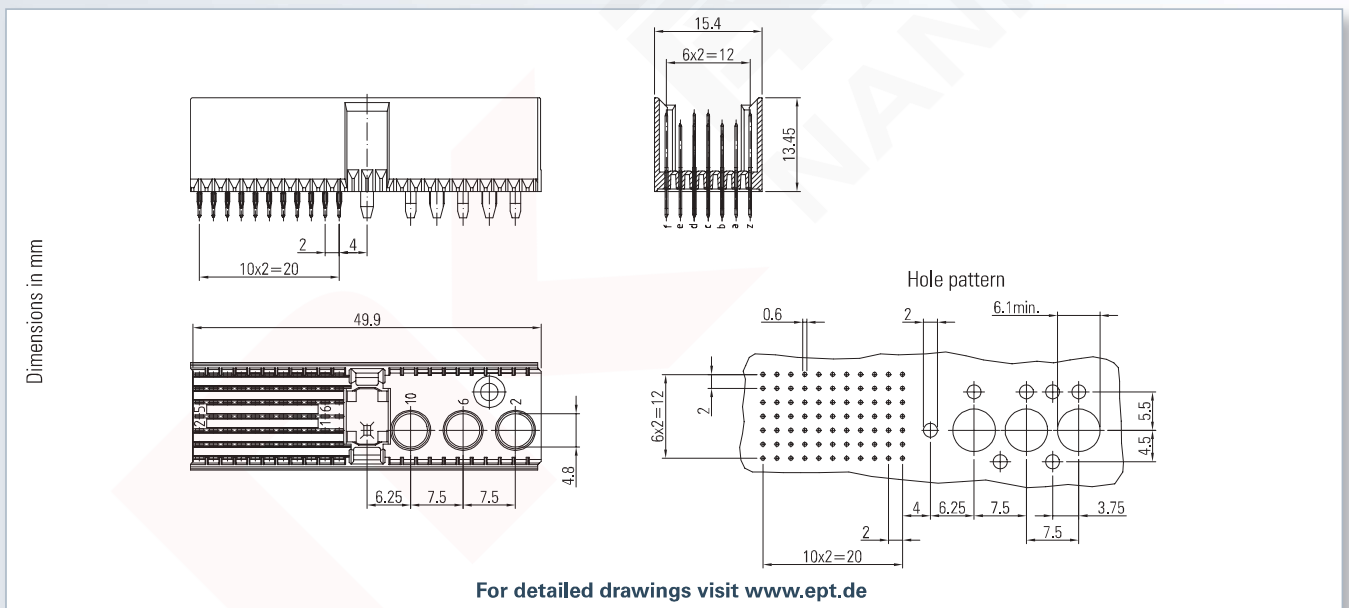
Operational current: 1.5 A

Packaging: Tube

Standard: IEC 61076-4-101



Technical Specifications on page 240



For detailed drawings visit www.ept.de

Accessories

- Coding p. 304

Note

- Pin length p. 245

Mating connector / Application:



Type M Female connector (p. 298)



Press-fit - Performance level II

No. of contacts	Contact arrangement	PCB thickness > 2.2 mm	
		Part number	PU (Tube)
55+3		243-41010-15	10/240
77+3		243-41310-15	

On request

- contact arrangement
- other contact surface
- processing tools

Ordering note

- PCB thickness 1.4 - 2.2 mm
(Part number 243-41xxx-05)



Press-fit - Performance level II

No. of contacts	Description	Part number	PU (Tray)
55+3	without shielding	244-41000-15	35/140
55+3	with shielding	244-41300-15	
—	lower shield	244-31600-1	48/1200

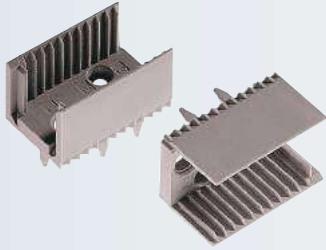
On request

- other contact surface
- processing tools

hm2.0



Type N Male Connector



Type: Male connector straight

Termination: Press-fit

Number of contacts: 3

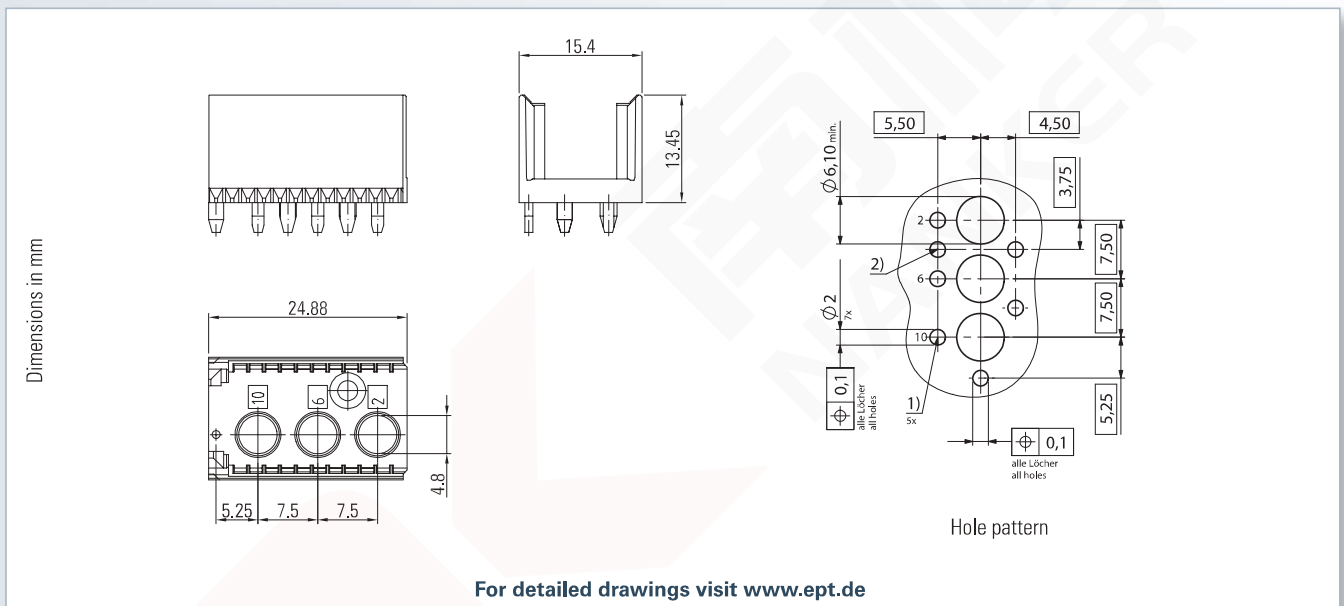
Pitch: 2 mm

Packaging: Bulk

Standard: IEC 61076-4-101



Technical Specifications on page 240



No. of contacts	Contact arrangement	Part number	PU (Bulk)
3	without shielding 	243-52000	1800

Mating connector / Application:



Type N Female connector (p. 301)



Type: Female connector 90°

Termination: Press-fit

Number of contacts: 3

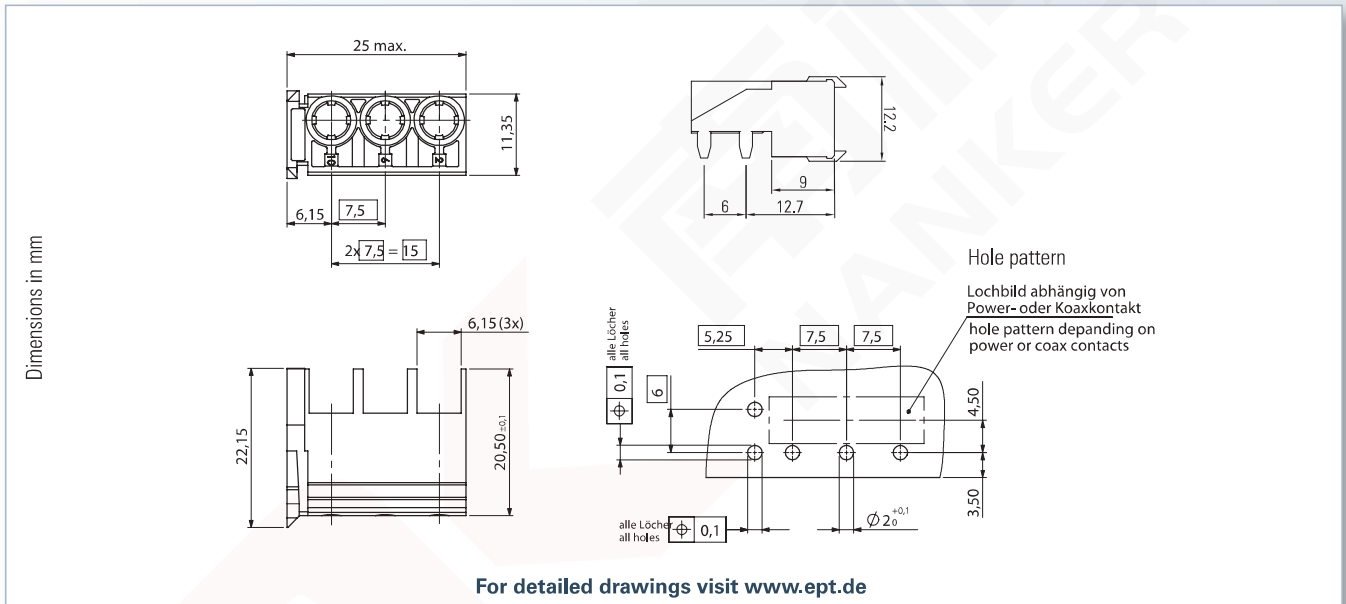
Pitch: 2 mm

Packaging: Bulk

Standard: IEC 61076-4-101



Technical Specifications on page 240

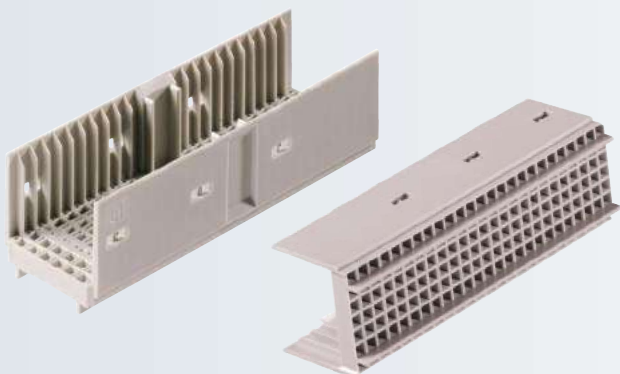


No. of contacts	Description	Part number	PU (Bulk)
3	ohne Abschirmung	244-52000	280

Mating connector / Application:



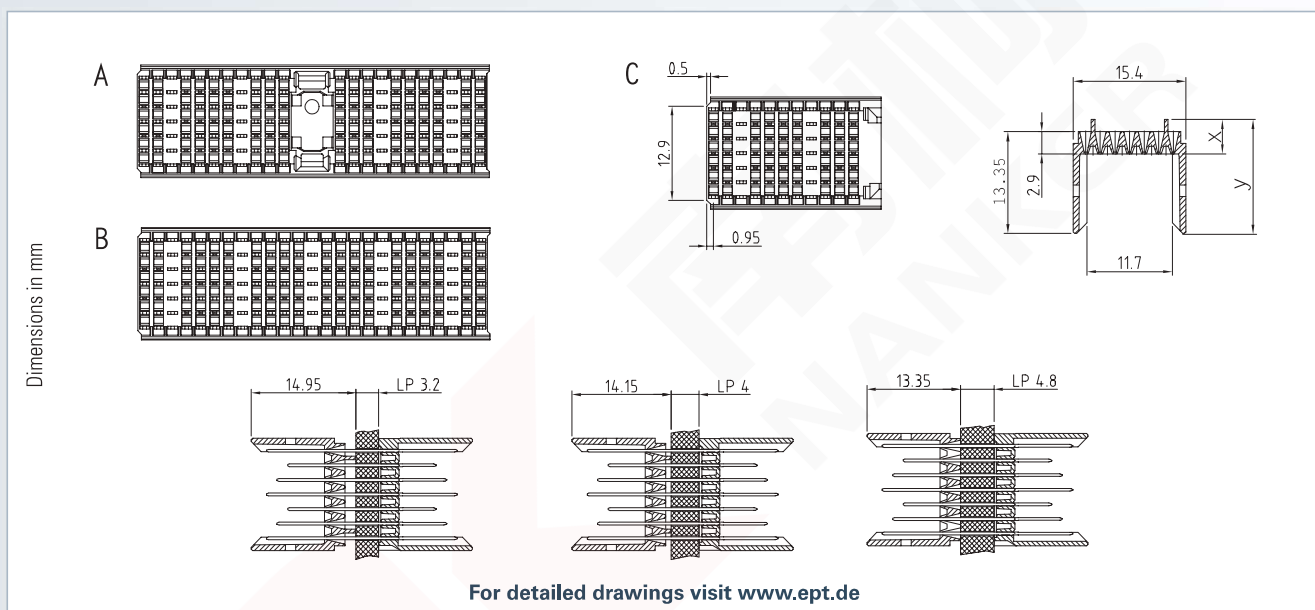
Type N Male connector (p. 300)



Type: Shroud
Pitch: 2 mm
Packaging: Bulk
Standard: IEC 61076-4-101



Technical Specifications on page 240



PCB thickness	X	Y	Part number		PU (Bulk)	Part number B22	PU (Bulk)	Part number B19	PU (Bulk)	Part number C	PU (Bulk)
			A	B							
< 2.4 mm	6.3 mm	16.75 mm	243-5525-5/1	243-5625-5/1	750	243-5622-5/1	850	243-5619-5/1	1000	243-5511-5/1	1800
2.4 – 3.2 mm	4.9 mm	15.35 mm	243-5525-4/1	243-5625-4/1		243-5622-4/1		243-5619-4/1		243-5511-4/1	
3.2 – 4.0 mm	4.5 mm	14.95 mm	243-5525-1/1	243-5625-1/1		243-5622-1/1		243-5619-1/1		243-5511-1/1	
4.0 – 4.8 mm	3.7 mm	14.15 mm	243-5525-2/1	243-5625-2/1		243-5622-2/1		243-5619-2/1		243-5511-2/1	
> 4.8 mm	2.9 mm	13.35 mm	243-5525-3/1	243-5625-3/1		243-5622-3/1		243-5619-3/1		243-5511-3/1	

On request

- different designs and special types

Accessories

- Processing tools p. 355

Application:

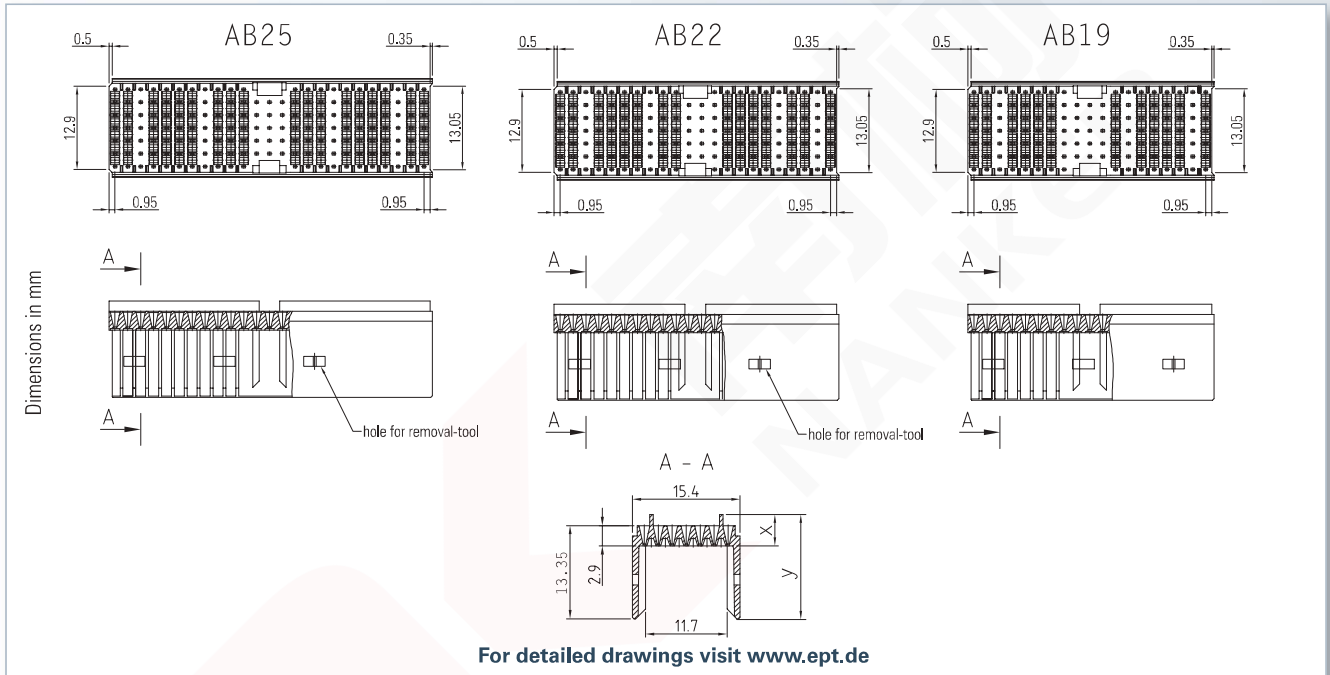
compatible with all male connectors with transfer zone



Type: Shroud
Pitch: 2 mm
Packaging: Bulk
Standard: IEC 61076-4-101



Technical Specifications on page 240



PCB thickness	X	Y	Part number		PU (Bulk)	Part number		PU (Bulk)	Part number		PU (Bulk)
			AB25			AB22 (cPCI RP 5)			AB19 (cPCI RP 3)		
< 2.4 mm	6.3 mm	16.75 mm	243-5725-5/1		750	243-5722-5/1		850	243-5719-5/1		1000
2.4 – 3.2 mm	4.9 mm	15.35 mm	243-5725-4/1			243-5722-4/1			243-5719-4/1		
3.2 – 4.0 mm	4.5 mm	14.95 mm	243-5725-1/1			243-5722-1/1			243-5719-1/1		
4.0 – 4.8 mm	3.7 mm	14.15 mm	243-5725-2/1			243-5722-2/1			243-5719-2/1		
> 4.8 mm	2.9 mm	13.35 mm	243-5725-3/1			243-5722-3/1			243-5719-3/1		

On request

- different designs and special types


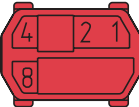
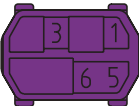
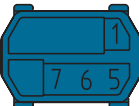
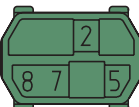
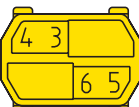
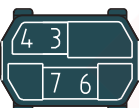
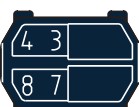
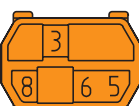

Accessories

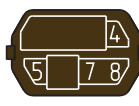
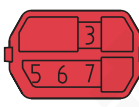
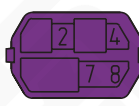
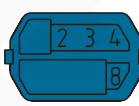
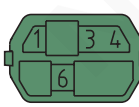
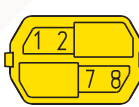
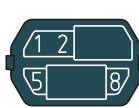
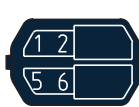
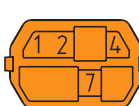
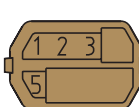
- Processing tools p. 355

Application

compatible with all male connectors with transfer zone

Coding keys

Male connector				PU (Bulk)
Coding key	Code No.	Color	Part number	
	1236	Nut brown RAL 8011	243-8011	1000
	1248	Strawberry red RAL 3018 Telephony Spec	243-8012	
	1356	Blue lilac RAL 4005	243-8013	
	1567	Brilliant blue RAL 5007 5.0 V cPCI	243-8014	
	2578	Reseda green RAL 6011	243-8021	
	3456	Rape yellow RAL 1021 3.3 V cPCI	243-8031	
	3467	Slate gray RAL 7015	243-8032	
	3478	Steel blue RAL 5011	243-8033	
	3568	Pastel orange RAL 2003	243-8034	
	4678	Ocher yellow RAL 1024	243-8041	

Female connector				PU (Bulk)
Coding key	Code No.	Color	Part number	
	4578	Nut brown RAL 8011	244-8011	1000
	3567	Strawberry red RAL 3018 Telephony Spec	244-8012	
	2478	Blue lilac RAL 4005	244-8013	
	2348	Brilliant blue RAL 5007 5.0 V cPCI	244-8014	
	1346	Reseda green RAL 6011	244-8021	
	1278	Rape yellow RAL 1021 3.3 V cPCI	244-8031	
	1258	Slate gray RAL 7015	244-8032	
	1256	Steel blue RAL 5011	244-8033	
	1247	Pastel orange RAL 2003	244-8034	
	1235	Ocher yellow RAL 1024	244-8041	