

插件穿孔磁珠

Ferrite Bead (EMI 6-Hole)



特性

Characteristics

阻抗将随着匝数的增加而增加，可在1到3匝内使用

Impedance will increase with more turns, available in 1 to 3 turns

4种不同的材料可用于完美的干扰抑制

4 different materials available for perfect interference suppression

可直接弯曲或单独长度

Also available ready-bent or in individual length

应用

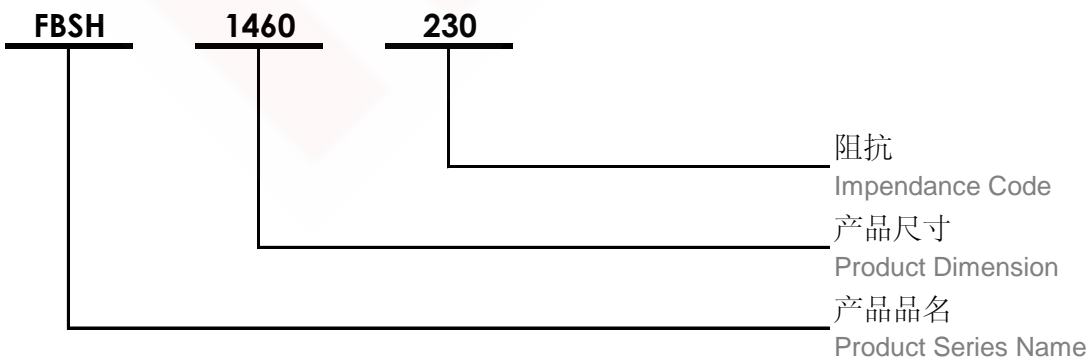
Application

防止射频干扰

Protection against radio frequency interferences

产品品名介绍

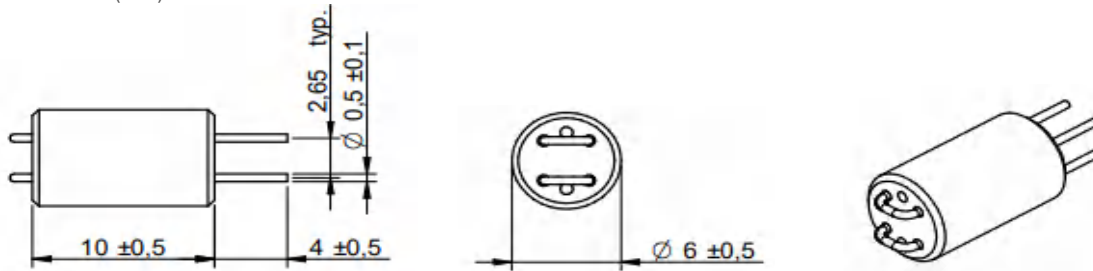
Product Number Structure





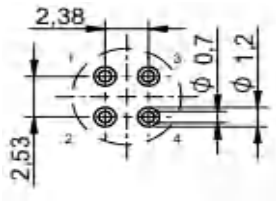
尺寸

Dimension (mm)



焊盘推荐

Land Pattern Recommended (mm)



示意图

Schematics



电性特性

Electrical Properties

型号 Part No.	阻抗 Impedance Z (Ω) ±25%	温升电流 Rated Current I _R 40°C max (A)	直流电阻 DC Resistance DCR _{max} (mΩ)	固化温度 Curie Temperature T _c °C	卷盘数量 Taping Reel Qty. pcs
FBSH1460-230	@ 25 MHz 145 @ 100 MHz 230	3.00	20.00	175	200

测试状态

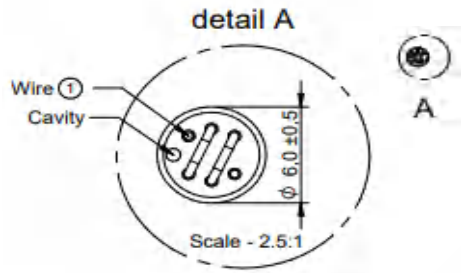
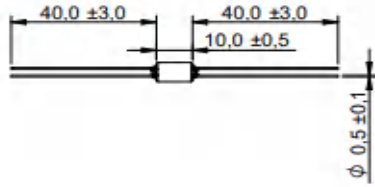
Test Condition

- ☆ 阻抗测试条件为 100MHz (25°C)
Impedance measure condition at 100MHz (25°C)
- ☆ 工作温度: -25°C ~ +125°C
Operating Temperature: -25°C ~ +125°C



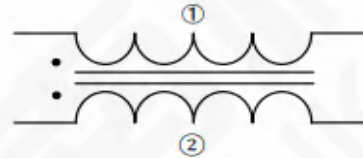
尺寸

Dimension (mm)



示意图

Schematics



电性特性

Electrical Properties

型号 Part No.	阻抗 Impedance Z (Ω) ±25%	温升电流 Rated Current I _R 40°C max (A)	直流电阻 DC Resistance DCR _{max} (mΩ)	固化温度 Curie Temperature T _c °C	卷盘数量 Taping Reel Qty. pcs
FBSH9060-512	@ 25 MHz 320 @ 100 MHz 512	3.00	20.00	175	200

测试状态

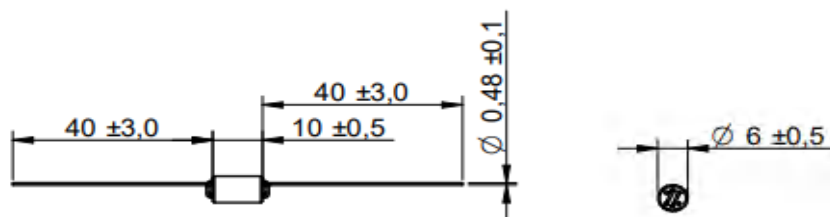
Test Condition

- ☆ 阻抗测试条件为 100MHz (25°C)
Impedance measure condition at 100MHz (25°C)
- ☆ 工作温度: -25°C ~ +125°C
Operating Temperature: -25°C ~ +125°C



尺寸

Dimension (mm)



示意图

Schematics



电性特性

Electrical Properties

型号 Part No.	阻抗 Impedance Z (Ω) ±25%	温升电流 Rated Current I _R 40°C max (A)	直流电阻 DC Resistance DCR _{max} (mΩ)	固化温度 Curie Temperature T _c °C	卷盘数量 Taping Reel Qty. pcs
FBSH9060-773	@ 25 MHz 702 @ 100 MHz 773	3.00	20.00	175	200

测试状态

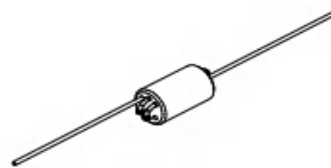
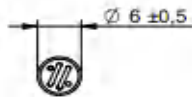
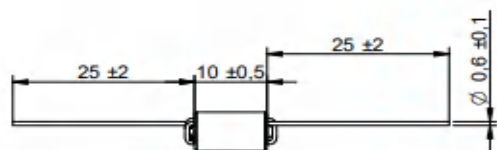
Test Condition

- ☆ 阻抗测试条件为 100MHz (25°C)
Impedance measure condition at 100MHz (25°C)
- ☆ 工作温度: -25°C ~ +125°C
Operating Temperature: -25°C ~ +125°C



尺寸

Dimension (mm)



示意图

Schematics



电性特性

Electrical Properties

型号 Part No.	阻抗 Impedance Z (Ω) ±25%	温升电流 Rated Current I _R 40°C max (A)	直流电阻 DC Resistance DCR _{max} (mΩ)	固化温度 Curie Temperature T _c °C	卷盘数量 Taping Reel Qty. pcs
FBSH6060-773	@ 25 MHz 702 @ 100 MHz 773	3.00	20.00	175	200

测试状态

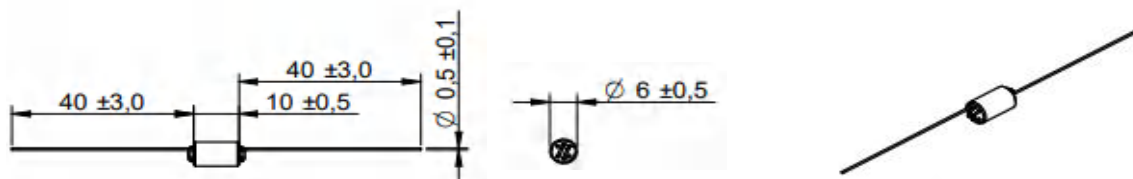
Test Condition

- ☆ 阻抗测试条件为 100MHz (25°C)
Impedance measure condition at 100MHz (25°C)
- ☆ 工作温度: -25°C ~ +125°C
Operating Temperature: -25°C ~ +125°C



尺寸

Dimension (mm)



示意图

Schematics



电性特性

Electrical Properties

型号 Part No.	阻抗 Impedance Z (Ω) ±25%	温升电流 Rated Current I _R 40°C max (A)	直流电阻 DC Resistance DCR _{max} (mΩ)	固化温度 Curie Temperature T _c °C	卷盘数量 Taping Reel Qty. pcs
FBSH9060-800	@ 25 MHz 598 @ 100 MHz 800	3.00	20.00	140	200

测试状态

Test Condition

- ☆ 阻抗测试条件为 100MHz (25°C)
Impedance measure condition at 100MHz (25°C)
- ☆ 工作温度: -25°C ~ +125°C
Operating Temperature: -25°C ~ +125°C



尺寸

Dimension (mm)



示意图

Schematics



电性特性

Electrical Properties

型号 Part No.	阻抗 Impedance Z (Ω) ±25%	温升电流 Rated Current I _R 40°C max (A)	直流电阻 DC Resistance DCR _{max} (mΩ)	固化温度 Curie Temperature T _c °C	卷盘数量 Taping Reel Qty. pcs
FBSH6060-800	@ 25 MHz 598 @ 100 MHz 800	3.00	20.00	140	200

测试状态

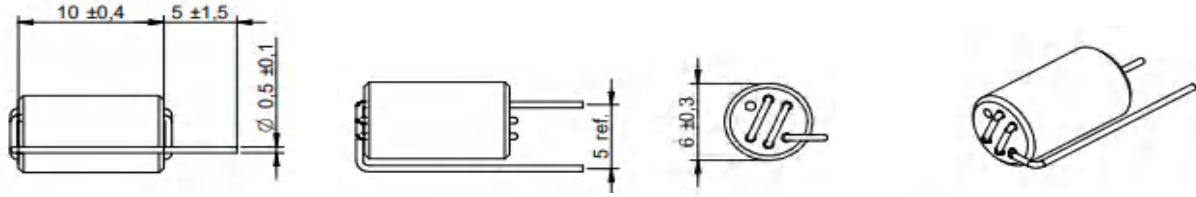
Test Condition

- ☆ 阻抗测试条件为 100MHz (25°C)
Impedance measure condition at 100MHz (25°C)
- ☆ 工作温度: -25°C ~ +125°C
Operating Temperature: -25°C ~ +125°C



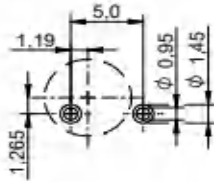
尺寸

Dimension (mm)



焊盘推荐

Land Pattern Recommended (mm)



示意图

Schematics



电性特性

Electrical Properties

型号 Part No.	阻抗 Impedance Z (Ω) ±25%	温升电流 Rated Current I _R 40°C max (A)	直流电阻 DC Resistance DCR _{max} (mΩ)	固化温度 Curie Temperature T _c °C	卷盘数量 Taping Reel Qty. pcs
FBSH1560-800	@ 25 MHz 623 @ 100 MHz 860	3.00	20.00	140	200

测试状态

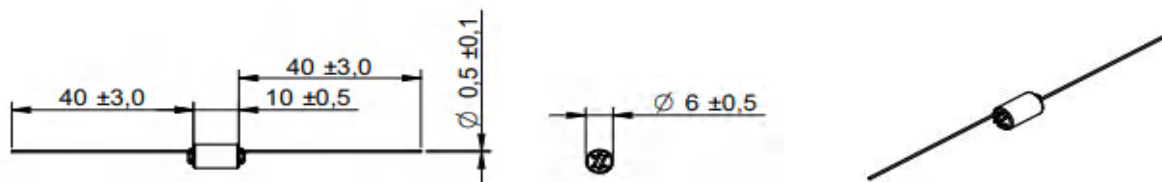
Test Condition

- ☆ 阻抗测试条件为 100MHz (25°C)
Impedance measure condition at 100MHz (25°C)
- ☆ 工作温度: -25°C ~ +125°C
Operating Temperature: -25°C ~ +125°C



尺寸

Dimension (mm)



示意图

Schematics



电性特性

Electrical Properties

型号 Part No.	阻抗 Impedance Z (Ω) ±25%	温升电流 Rated Current I _R 40°C max (A)	直流电阻 DC Resistance DCR _{max} (mΩ)	固化温度 Curie Temperature T _c °C	卷盘数量 Taping Reel Qty. pcs
FBSH9060-938	@ 25 MHz 489 @ 100 MHz 938	3.00	20.00	140	200

测试状态

Test Condition

- ☆ 阻抗测试条件为 100MHz (25°C)
Impedance measure condition at 100MHz (25°C)
- ☆ 工作温度: -25°C ~ +125°C
Operating Temperature: -25°C ~ +125°C



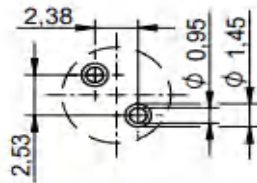
尺寸

Dimension (mm)



焊盘推荐

Land Pattern Recommended (mm)



示意图

Schematics



电性特性

Electrical Properties

型号 Part No.	阻抗 Impedance Z (Ω) ±25%	温升电流 Rated Current I _R 40°C max (A)	直流电阻 DC Resistance DCR _{max} (mΩ)	固化温度 Curie Temperature T _c °C	卷盘数量 Taping Reel Qty. pcs
FBSH3060-950	@ 25 MHz 650 @ 100 MHz 950	3.00	20.00	140	200

测试状态

Test Condition

- ☆ 阻抗测试条件为 100MHz (25°C)
Impedance measure condition at 100MHz (25°C)
- ☆ 工作温度: -25°C ~ +125°C
Operating Temperature: -25°C ~ +125°C



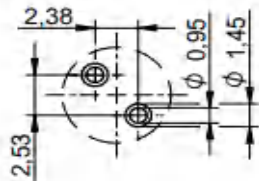
尺寸

Dimension (mm)



焊盘推荐

Land Pattern Recommended (mm)



示意图

Schematics



电性特性

Electrical Properties

型号 Part No.	阻抗 Impedance Z (Ω) ±25%	温升电流 Rated Current I _R 40°C max (A)	直流电阻 DC Resistance DCR _{max} (mΩ)	固化温度 Curie Temperature T _c °C	卷盘数量 Taping Reel Qty. pcs
FBSH4860-961	@ 25 MHz 920 @ 100 MHz 961	3.00	20.00	175	200

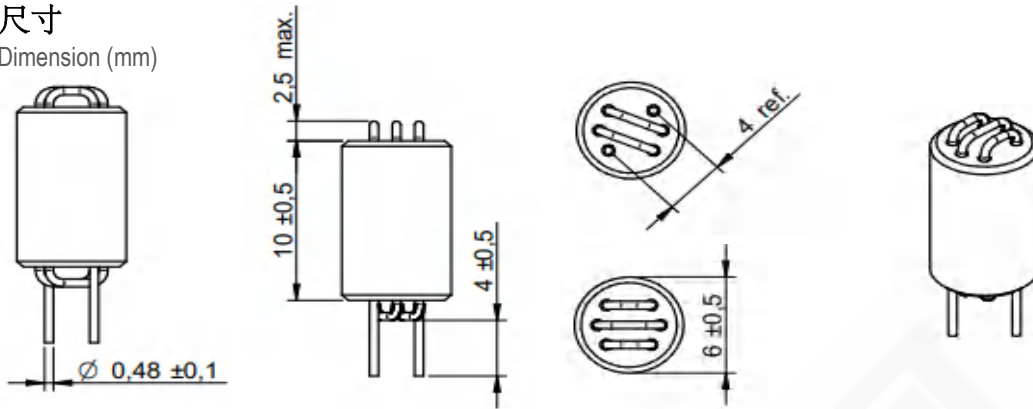
测试状态

Test Condition

- ☆ 阻抗测试条件为 100MHz (25°C)
Impedance measure condition at 100MHz (25°C)
- ☆ 工作温度: -25°C ~ +125°C
Operating Temperature: -25°C ~ +125°C



尺寸
Dimension (mm)



焊盘推荐
Land Pattern Recommended (mm)

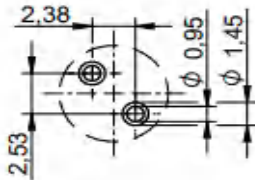


示意图
Schematics



电性特性
Electrical Properties

型号 Part No.	阻抗 Impedance Z (Ω) ±25%	温升电流 Rated Current I _R 40°C max (A)	直流电阻 DC Resistance DCR _{max} (mΩ)	固化温度 Curie Temperature T _c °C	卷盘数量 Taping Reel Qty. pcs
FBSH1660-910	@ 25 MHz 920 @ 100 MHz 910	3.00	20.00	175	200

测试状态

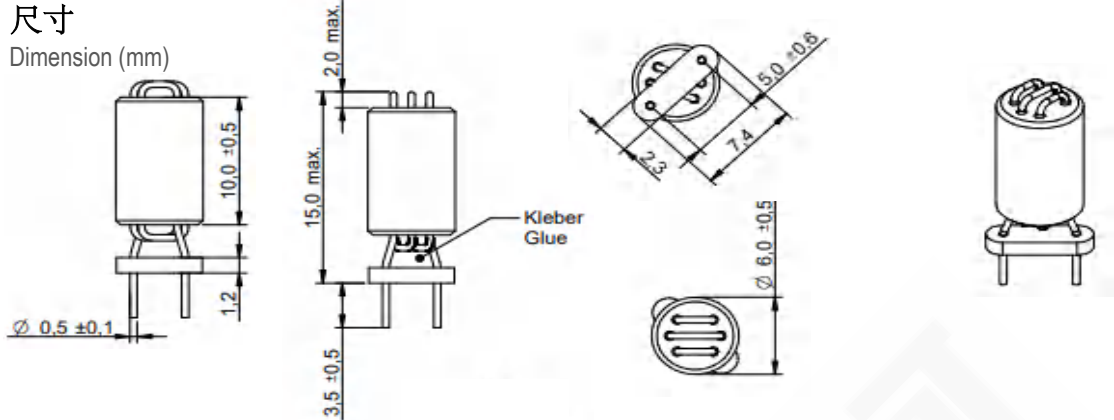
Test Condition

- ☆ 阻抗测试条件为 100MHz (25°C)
Impedance measure condition at 100MHz (25°C)
- ☆ 工作温度: -25°C ~ +125°C
Operating Temperature: -25°C ~ +125°C



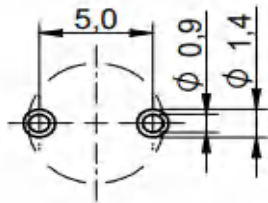
尺寸

Dimension (mm)



焊盘推荐

Land Pattern Recommended (mm)



示意图

Schematics



电性特性

Electrical Properties

型号 Part No.	阻抗 Impedance Z (Ω) ±25%	温升电流 Rated Current I _R 40°C max (A)	直流电阻 DC Resistance DCR _{max} (mΩ)	固化温度 Curie Temperature T _c °C	卷盘数量 Taping Reel Qty. pcs
FBSH1860-910	@25 MHz 920 @100 MHz 910	3.00	20.00	175	200

测试状态

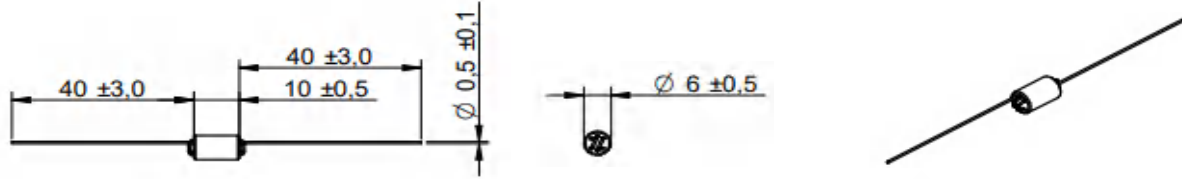
Test Condition

- ☆ 阻抗测试条件为 100MHz (25°C)
Impedance measure condition at 100MHz (25°C)
- ☆ 工作温度: -25°C ~ +125°C
Operating Temperature: -25°C ~ +125°C



尺寸

Dimension (mm)



示意图

Schematics



电性特性

Electrical Properties

型号 Part No.	阻抗 Impedance Z (Ω) ±25%	温升电流 Rated Current I _R 40°C max (A)	直流电阻 DC Resistance DCR _{max} (mΩ)	固化温度 Curie Temperature T _c °C	卷盘数量 Taping Reel Qty. pcs
FBSH9060-976	@ 25 MHz 670 @ 100 MHz 976	3.00	20.00	175	200

测试状态

Test Condition

- ☆ 阻抗测试条件为 100MHz (25°C)
Impedance measure condition at 100MHz (25°C)
- ☆ 工作温度: -25°C ~ +125°C
Operating Temperature: -25°C ~ +125°C



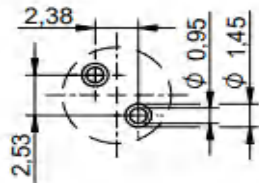
尺寸

Dimension (mm)



焊盘推荐

Land Pattern Recommended (mm)



示意图

Schematics



电性特性

Electrical Properties

型号 Part No.	阻抗 Impedance Z (Ω) ±25%	温升电流 Rated Current I _R 40°C max (A)	直流电阻 DC Resistance DCR _{max} (mΩ)	固化温度 Curie Temperature T _c °C	卷盘数量 Taping Reel Qty. pcs
FBSH3060-1240	@ 25 MHz 720 @ 100 MHz 1,240	3.00	20.00	175	200

测试状态

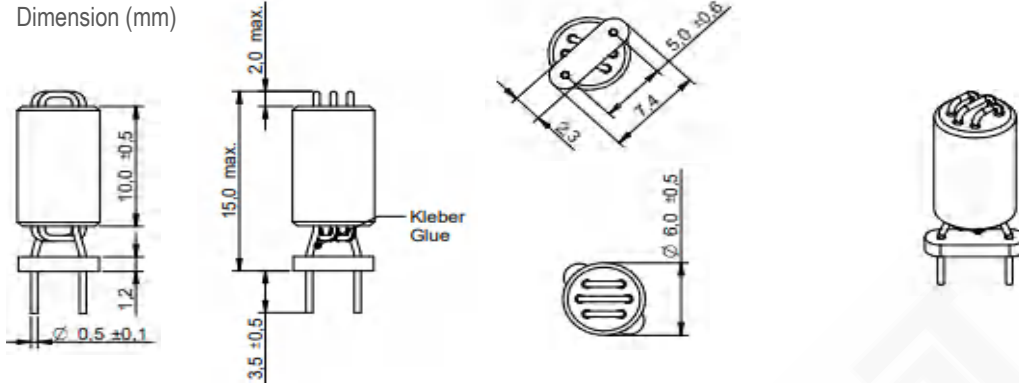
Test Condition

- ☆ 阻抗测试条件为 100MHz (25°C)
Impedance measure condition at 100MHz (25°C)
- ☆ 工作温度: -25°C ~ +125°C
Operating Temperature: -25°C ~ +125°C



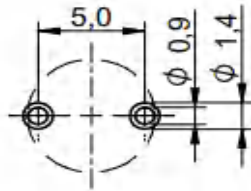
尺寸

Dimension (mm)



焊盘推荐

Land Pattern Recommended (mm)



示意图

Schematics



电性特性

Electrical Properties

型号 Part No.	阻抗 Impedance Z (Ω) ±25%	温升电流 Rated Current I _R 40°C max (A)	直流电阻 DC Resistance DCR _{max} (mΩ)	固化温度 Curie Temperature T _c °C	卷盘数量 Taping Reel Qty. pcs
FBSH2060-1240	@ 25 MHz 720 @ 100 MHz 1,240	3.00	20.00	175	200

测试状态

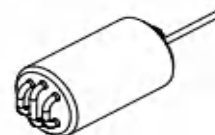
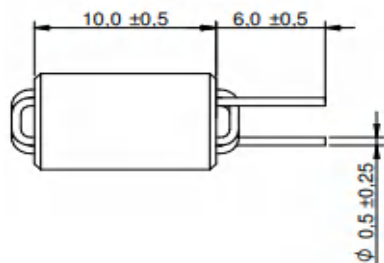
Test Condition

- ☆ 阻抗测试条件为 100MHz (25°C)
Impedance measure condition at 100MHz (25°C)
- ☆ 工作温度: -25°C ~ +125°C
Operating Temperature: -25°C ~ +125°C



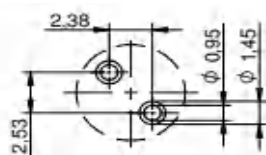
尺寸

Dimension (mm)



焊盘推荐

Land Pattern Recommended (mm)



电性特性

Electrical Properties

型号 Part No.	阻抗 Impedance Z (Ω) ±25%	温升电流 Rated Current I _R 40°C max (A)	直流电阻 DC Resistance DCR _{max} (mΩ)	固化温度 Curie Temperature T _c °C	卷盘数量 Taping Reel Qty. pcs
FBSH1660-1240	@ 25 MHz 720 @ 100 MHz 1,240	3.00	20.00	175	200

测试状态

Test Condition

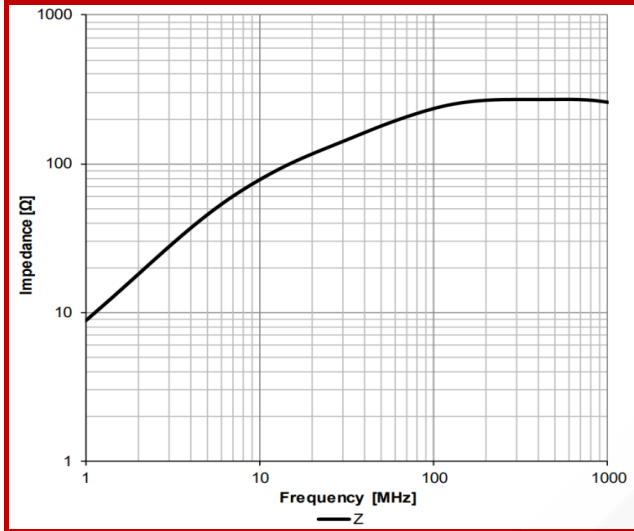
- ☆ 阻抗测试条件为 100MHz (25°C)
Impedance measure condition at 100MHz (25°C)
- ☆ 工作温度: -25°C ~ +125°C
Operating Temperature: -25°C ~ +125°C



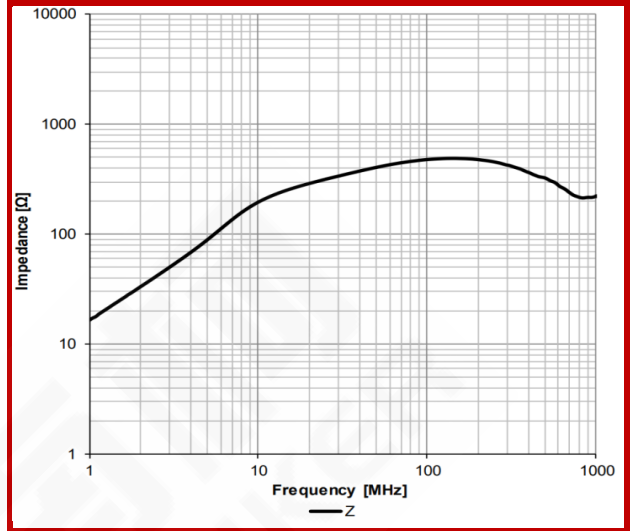
典型阻抗特性

Typical Impedance Characteristics

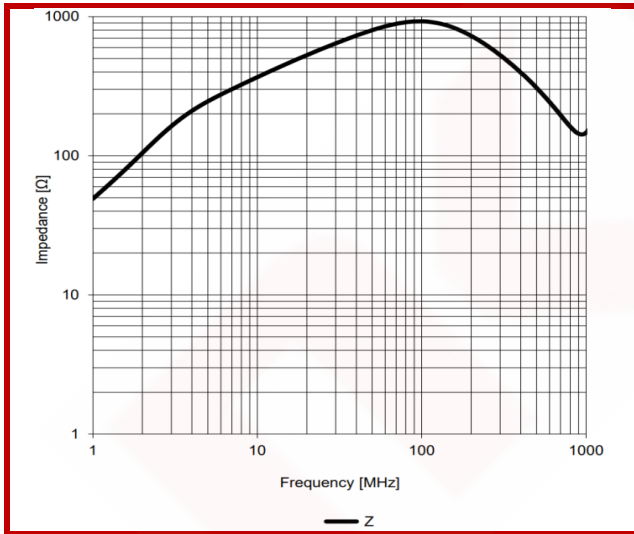
FBSH1460-230



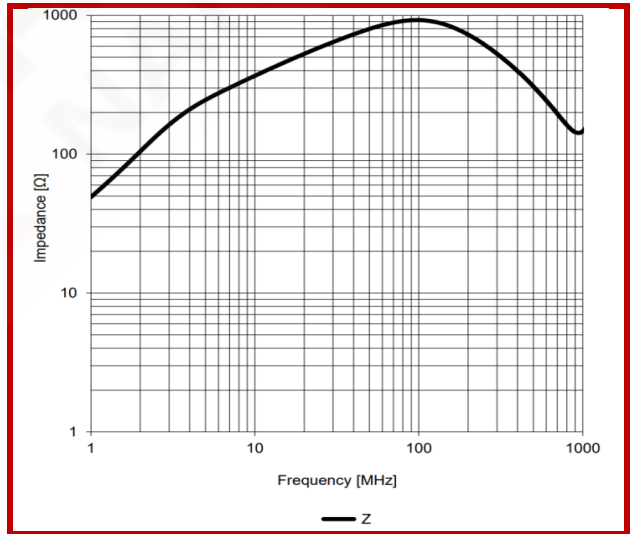
FBSH9060-512



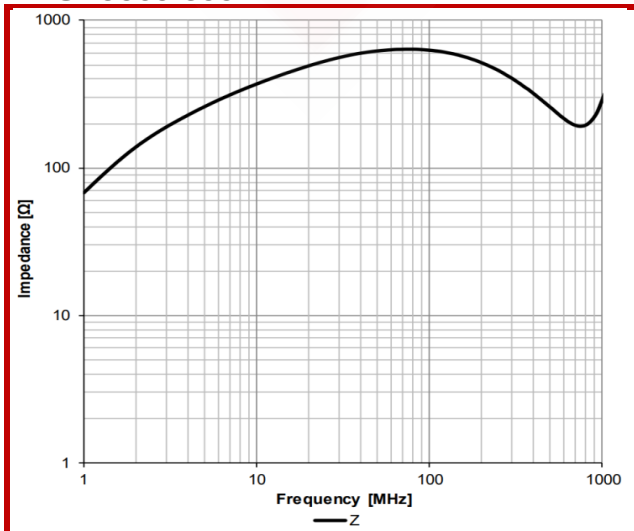
FBSH9060-773



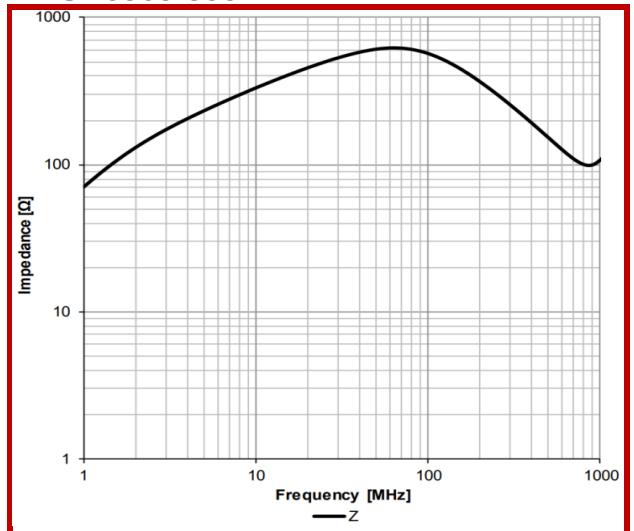
FBSH6060-773

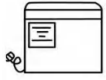


FBSH9060-800



FBSH6060-800

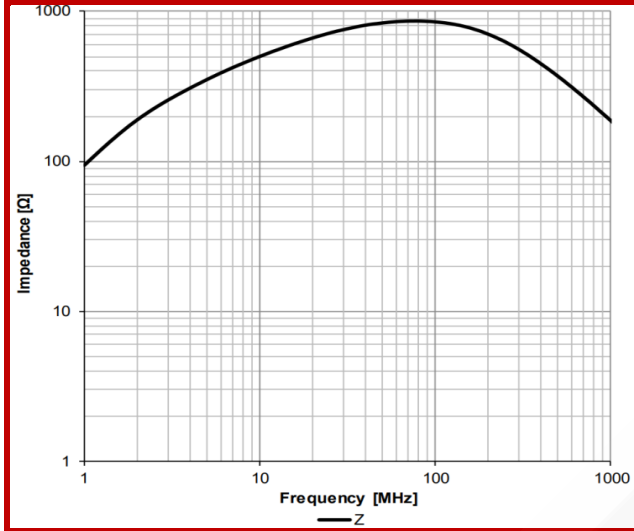




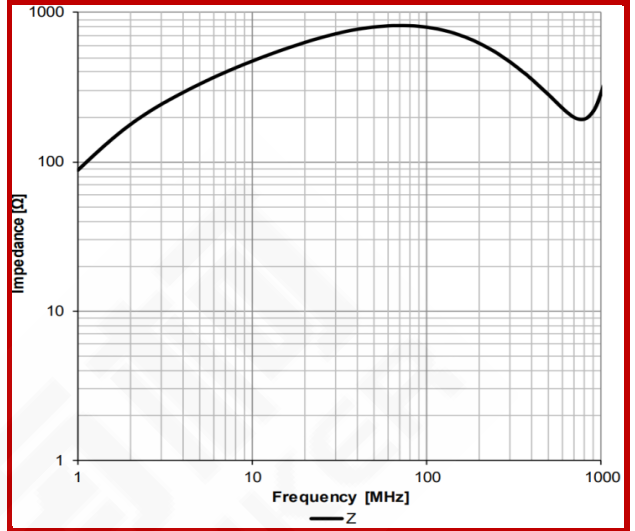
典型阻抗特性

Typical Impedance Characteristics

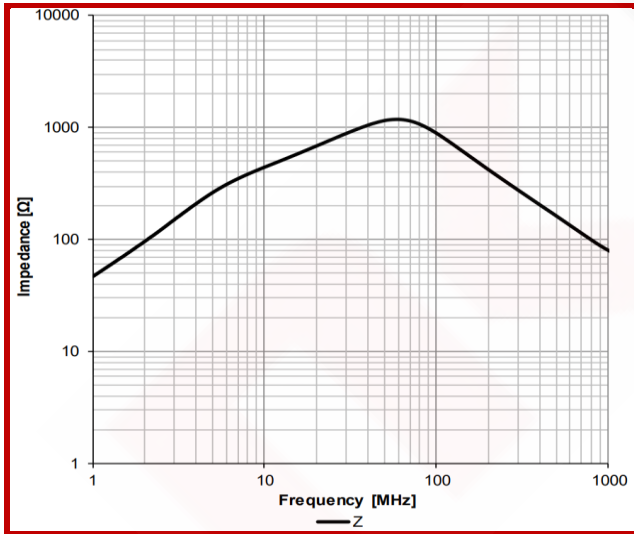
FBSH1560-800



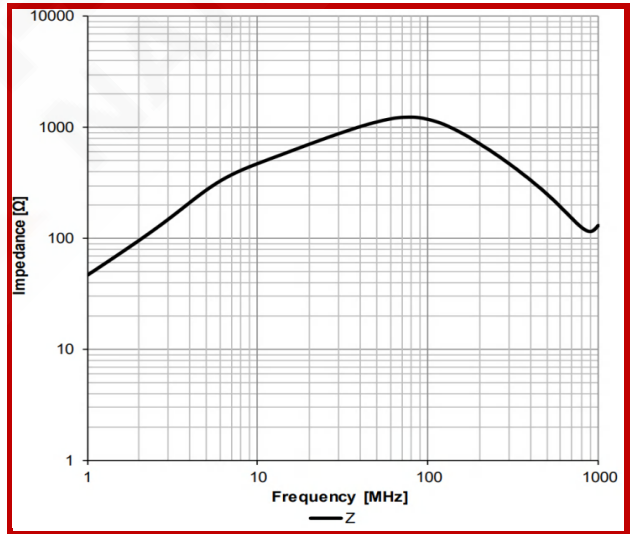
FBSH9060-938



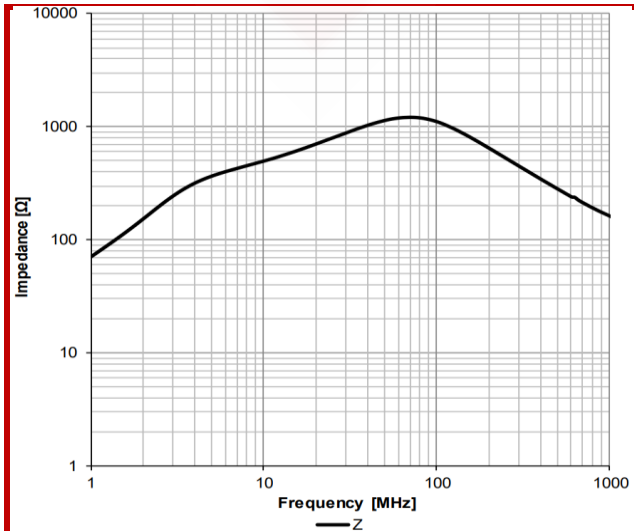
FBSH3060-950



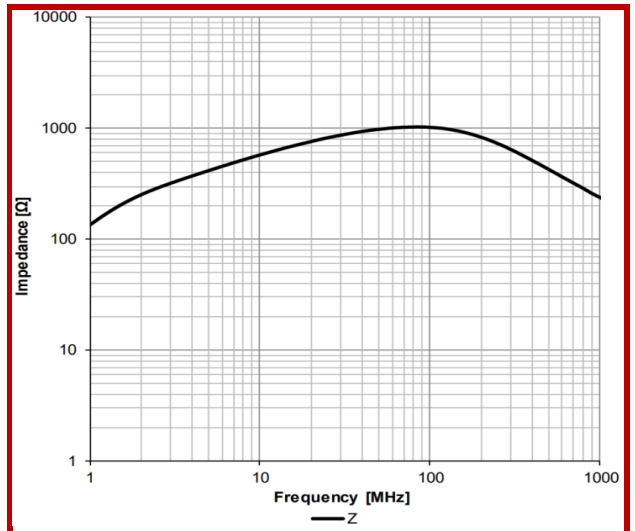
FBSH4860-950



FBSH1660-950



FBSH1860-950

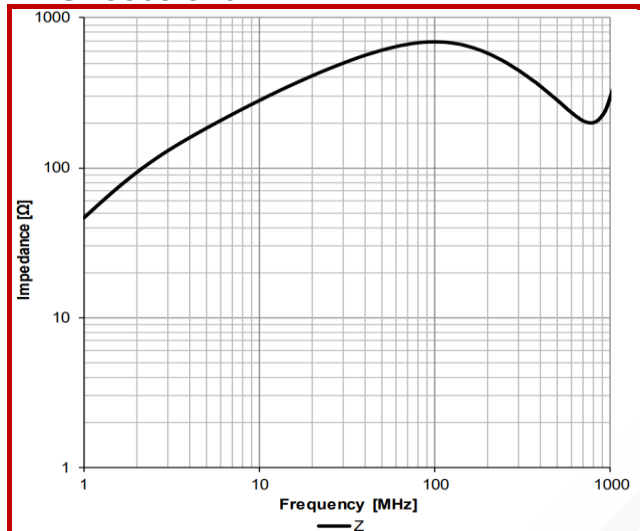




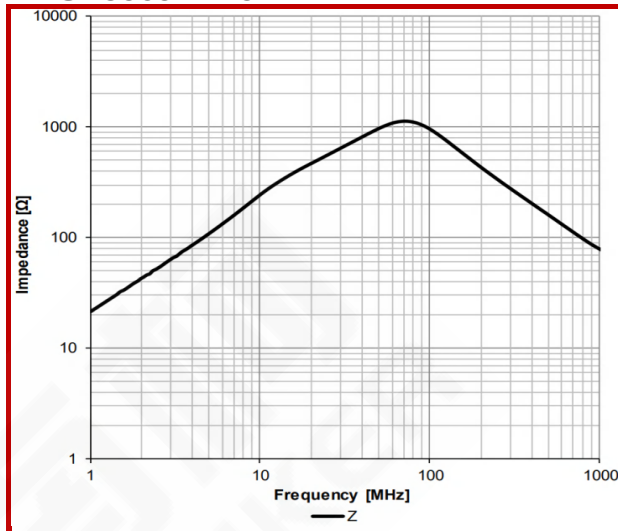
典型阻抗特性

Typical Impedance Characteristics

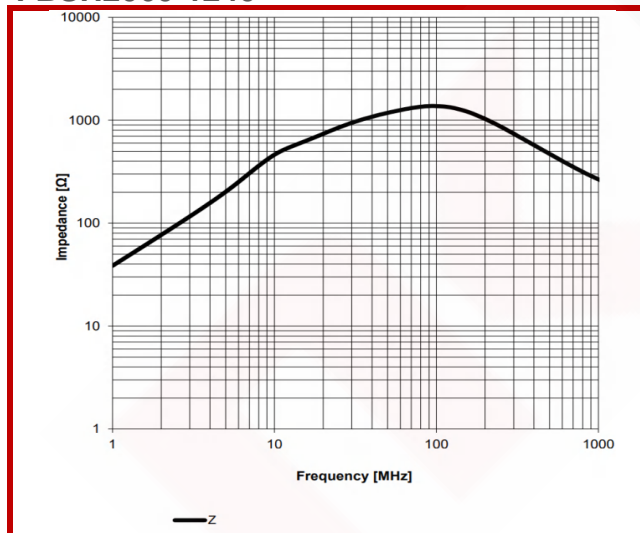
FBSH9060-976



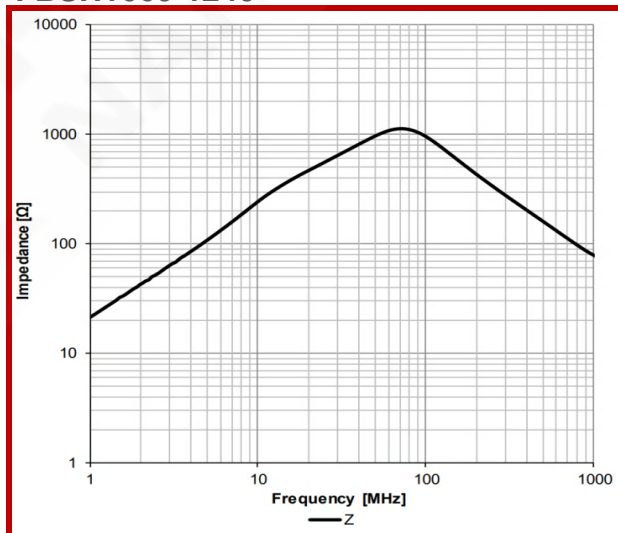
FBSH3060-1240



FBSH2060-1240



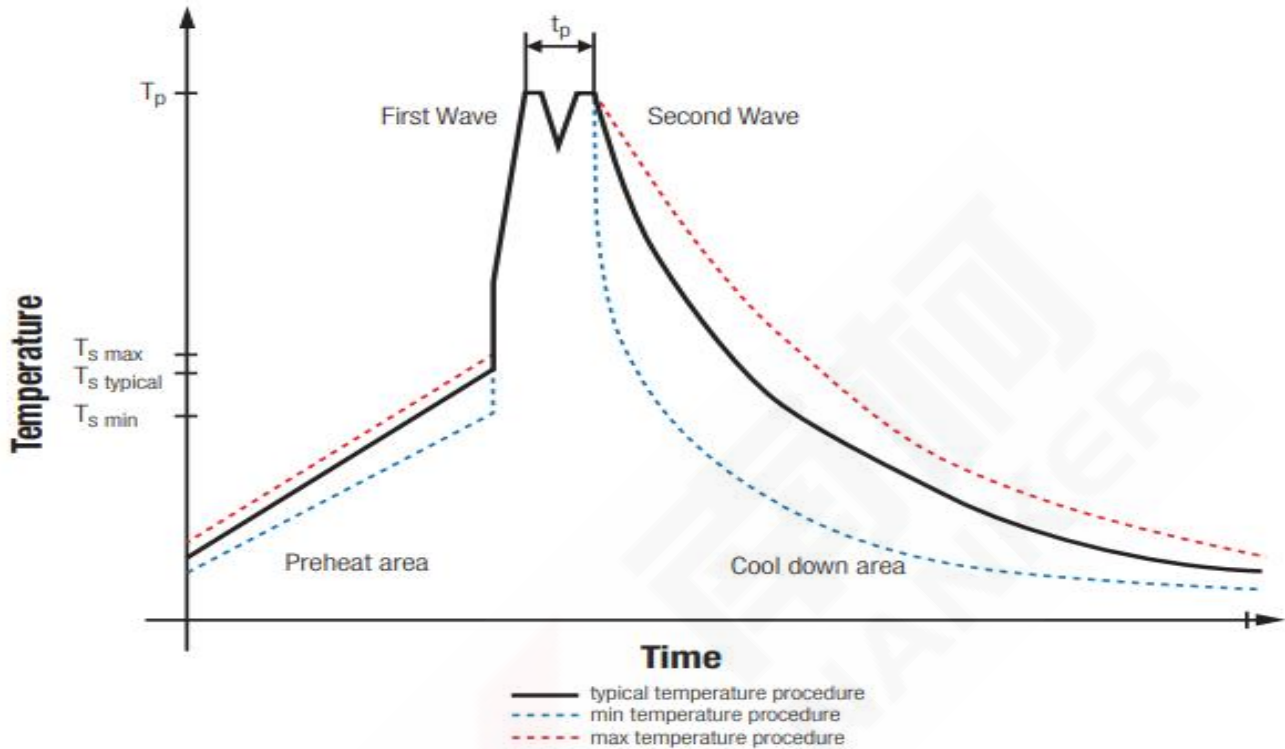
FBSH1660-1240





波峰焊线图

Classification Wave Soldering Profile



封装体峰值温度(T_p)分类

Classification Reflow Soldering Profile:

Profile Feature			Pb-Free Assembly	Sn-Pb Assembly
Preheat Temperature Min	$T_{s \text{ min}}$	$T_{s \text{ min}}$	100°C	100°C
Preheat Temperature Typical	$T_{s \text{ typical}}$	$T_{s \text{ typical}}$	120°C	120°C
Preheat Temperature Max	$T_{s \text{ max}}$	$T_{s \text{ max}}$	130°C	130°C
Preheat Time t_s from $T_{s \text{ min}}$ to $T_{s \text{ max}}$	t_s	t_s	70 seconds	70 seconds
Ramp-up Rate	ΔT	ΔT	150°C max	150°C max
Peak Temperature	T_p	T_p	250°C ~ 260°C	235°C ~ 260°C
Time of actual peak temperature	t_p	t_p	max. 10 seconds max. 5 seconds each wave	max. 10 seconds max. 5 seconds each wave
Ramp-down Rate, Min			~ 2K/seconds	~ 2K/seconds
Ramp-down Rate, Typical			~3.5K/seconds	~3.5K/seconds
Ramp-down Rate, Max			5K/seconds	5K/seconds
Time 25°C to 25°C			4 minutes	4 minutes

* 波峰焊参照标准EN61760-1:2006。
Wave Soldering is refer to standard EN61760-1:2006